

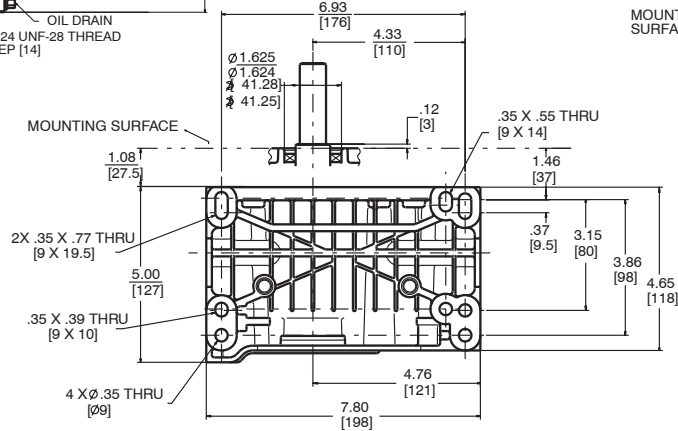
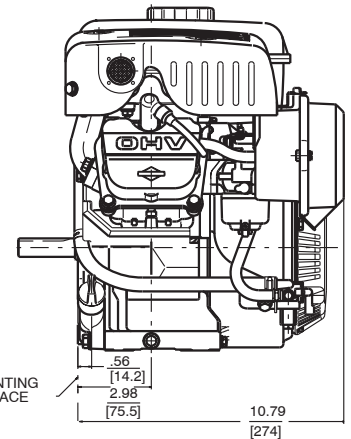
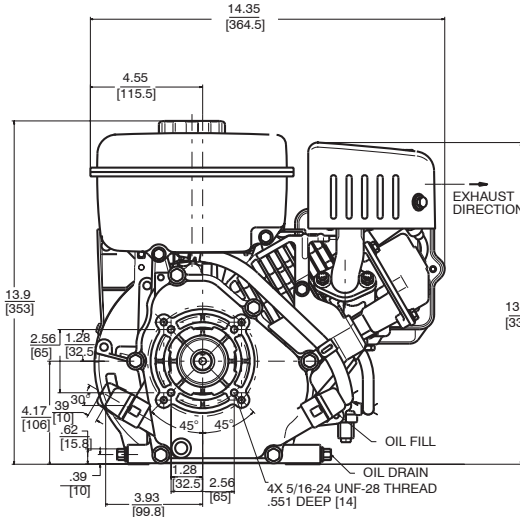
Vanguard™ 6.0 Gross HP 181 CC

Bore 2.67 in. (68 mm)
Stroke 1.96 in. (50 mm)
Oil Capacity 24 fl. oz. (0.71 L)



Features:

- Dura-Bore™ cast iron cylinder sleeve for extended life
- Float carburetor for consistent easy starting
- Maintenance-free Magnetron® electronic ignition for quick, dependable starts
- Dual-Clean™ air cleaner pleated paper filter with a foam pre-cleaner ensures maximum protection for extended engine life
- Oil Gard low oil engine shutdown device
- Overhead valve design (OHV) for cooler operation and longer valve life
- Buyer protection package provides two-year commercial engine warranty



Model Type	Shipping Weight	Crankshaft	Crankshaft (P.T.O.) Extension	Dimension	Starter Position Bolt-On/Changeable	Oil Filler & Drain	Governor	Controls	Manual Choke	Fuel Tank (Quarts)	Rocker Stop Switch	Oil Gard	Flange Mtg.	Top Governor Speed	Notes
118432															
0035	44	711332	Threaded 5/8-18	2-27/64(c)	12	D	M	AG/MF	X	3.8	X	X	X	3600	•
0036	48	711190	3/4" dia., Keyway, tapped 5/16-24	2-27/64(c)	12	D	M	AG/MF	X	3.8	X	X	X	3600	•
0060	48	715903	25 mm dia., Keyway, tapped 5/16-24	2-27/64(c)	12	D	M	AG/MF	X	3.8	X	X	X	3600	•
0061	48	711331	Tapered, tapped 5/16-24	2-13/16(c)	12	D	M	AG	X	*	X	X	X	3800	••

• Ball bearing PTO and magneto side * Fuel Tank and Muffler Omitted