

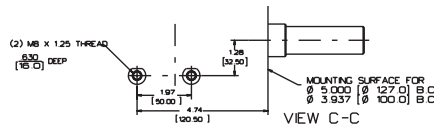
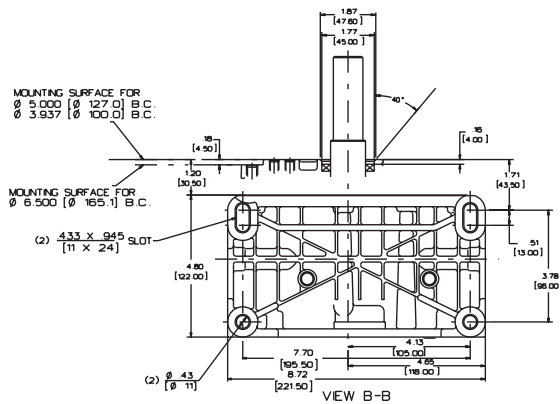
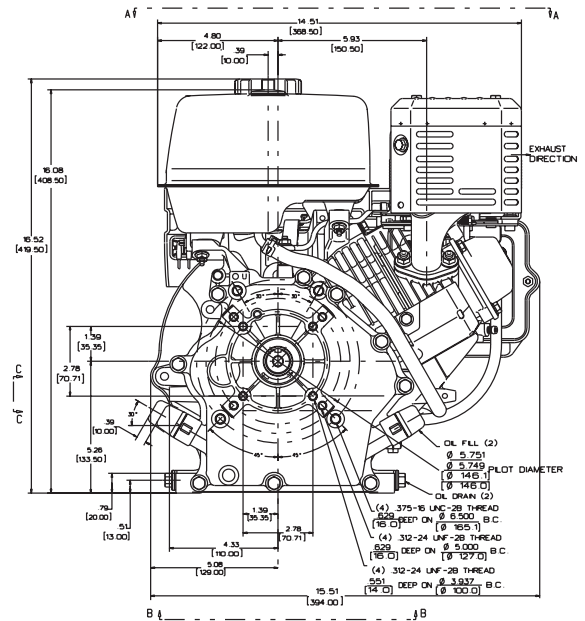
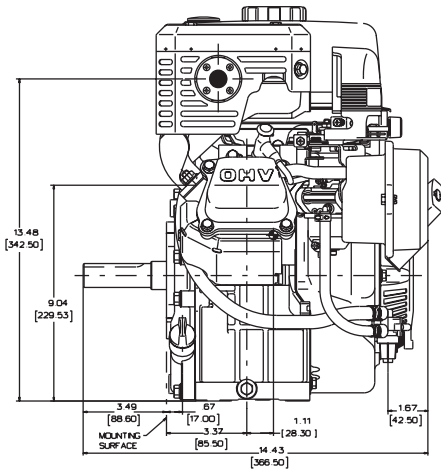
Vanguard™ 7.5 Gross HP 215 CC

Bore 2.83 in. (72 mm)
Stroke 2.05 in. (52 mm)
Oil Capacity 32 fl. oz. (0.95 L)



Features:

- Dura-Bore™ cast iron cylinder sleeve for extended life
- Maintenance-free Magnetron® electronic ignition for quick, dependable starts
- Dual-Clean™ air cleaner pleated paper filter with a foam pre-cleaner ensures maximum protection for extended engine life
- Oil Gard low oil engine shutdown device
- Overhead valve design (OHV) for cooler operation and longer valve life
- Buyer protection package provides two-year commercial engine warranty



Model Type	Shipping Weight	Crankshaft	Crankshaft (P.T.O.) Extension	Dimension	Starter Position Bolt-On/Changeable	Governor	Controls	Flange Mtg	Manual Choke	Rocker Stop Switch	Oil Gard	Fuel Tank (Quarts)	Top Governor Speed	Notes
138432														
0035	53	715426	1" dia., Keyway, tapped 7/16-20	2-29/32(c)	10:30	M	AG/R/MF	X	X	X	X	4.8	3600	•
0047	52	715499	3/4" dia., Keyway, tapped 5/16-24	2-27/64(c)	10:30	M	AG/R/MF	X	X	X	X	4.8	3600	•
138437														
0284	63	715426	1" dia., Keyway, tapped 7/16-20	2-29/32(c)	10:30	M	AG/R/MF	X	X	X	X	4.8	3600	•◆

• Ball bearing PTO, DU magneto side. ◆ Engine equipped with 12 Volt Gear Drive Starter and 10 Amp DC Alternator with Starter Panel Assembly.