

8.25 Gross Torque

205 cc

Bore 2.69 in. (68.3 mm)

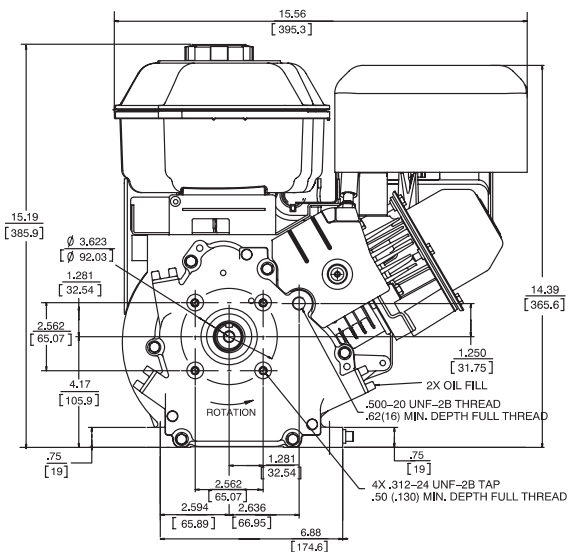
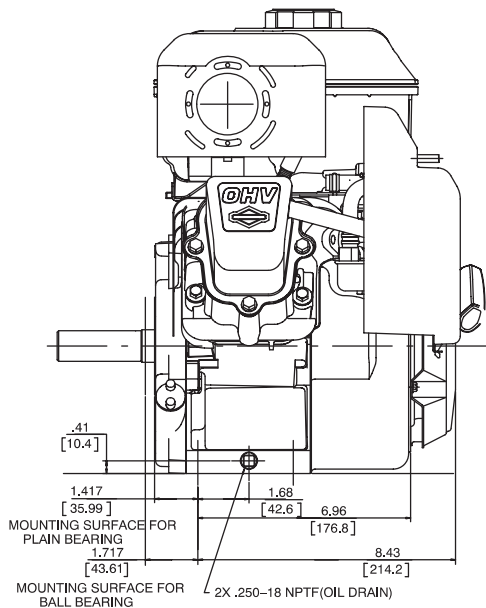
Stroke 2.2 in. (55.9 mm)

Oil Capacity 18-20 fl. oz. (0.53 - 0.59 L)



Features:

- Kool Bore™ Aluminum alloy bore for cooler operation
- Float carburetor for consistent easy starting
- Maintenance-free Magnetron® electronic ignition for quick, dependable starts
- Overhead valve design (OHV) for cooler operation and longer valve life
- Maxi-Clean™ automotive type pleated paper air filter provides superior protection for long engine life



Model Type	Shipping Weight	Crankshaft	Crankshaft (P.T.O.) Extension	Dimension	Starter Position	Oil Filler & Drain	Governor	Controls	Manual Choke	Fuel Tank (Quarts)	Remote Stop Switch	Flange Mtg.	Top Governor Speed	Notes
126312														
0523	40	699445	3/4" dia., Keyway, tapped 5/16-24	2-5/16(a)	10:30	D	M	R/AG/MF	X	3	X	X	3800	
0560	39	699451	1" dia., Keyway, tapped 3/8-24	2-7/8(c)	10:30	D	M	R/AG/MF	X	3	X	X	3800	
126332														
0535	39	699441	Threaded 5/18-18	2-27/64(c)	10:30	D	M	R/AG/MF	X	3	X	X	4000	•
0536	40	699443	3/4" dia., Keyway, tapped 5/16-24	2-27/64(c)	10:30	D	M	R/AG/MF	X	3	X	X	3600	•
126352														
0549	44	699444	6 to 1 gear reduction CCW rotation, Gear shaft 3/4" dia., Keyway	2(a)	10:30	D	M	R/AG/MF	X	3	X	X	3600	
126392														
0570	40	699445	3/4" dia., Keyway, tapped 5/16-24, Aux P.T.O. 1/2 dia.	2-5/16(a)	10:30	D	M	R/AG/MF	X	3	X		3800	

• Ball bearing PTO