

Vanguard™ 4.0 Gross HP 126 CC

Bore 2.44 in. (62 mm)

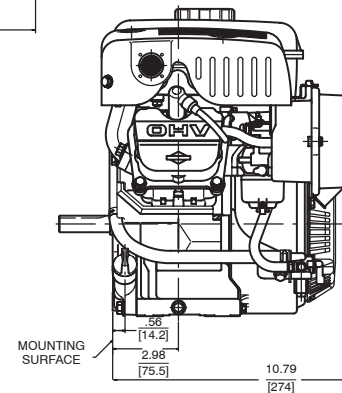
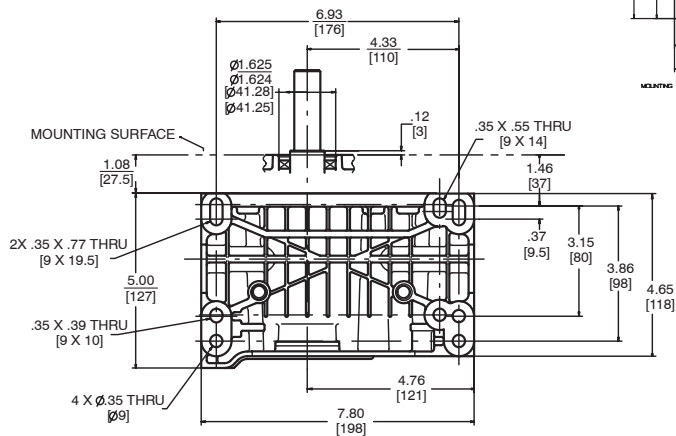
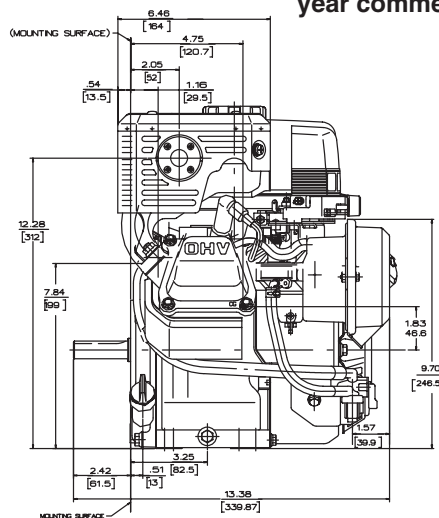
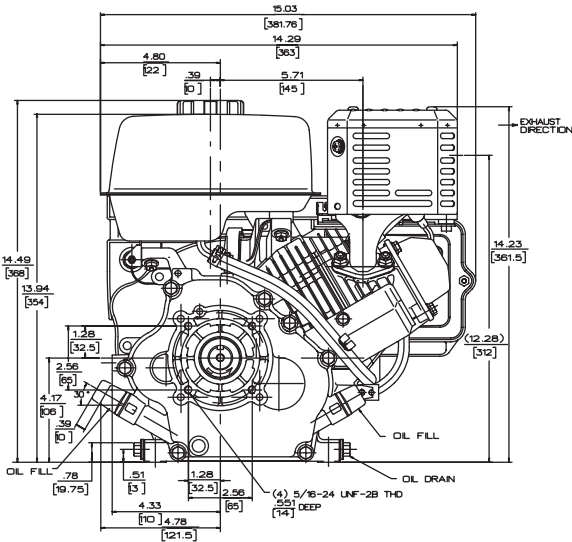
Stroke 1.65 in. (42 mm)

Oil Capacity 20 fl. oz. (0.59 L)



Features:

- Dura-Bore™ cast iron cylinder sleeve for extended life
- Float carburetor for consistent easy starting
- Maintenance-free Magnetron® electronic ignition for quick, dependable starts
- Dual-Clean™ air cleaner pleated paper filter with a foam pre-cleaner ensures maximum protection for extended engine life
- Oil Gard low oil engine shutdown device
- Overhead valve design (OHV) for cooler operation and longer valve life
- Buyer protection package provides two-year commercial engine warranty



Model Type	Shipping Weight	Crankshaft	Crankshaft (P.T.O.) Extension	Dimension	Starter Position Bolt-On/Changeable	Oil Filler & Drain	Governor	Controls	Manual Choke	Fuel Tank (Quarts)	Rocker Stop Switch	Oil Gard	Flange Mtg.	Top Governor Speed	Notes
86432															
0135	35	716053	3/4" dia., Keyway, tapped 5/16-24	2-27/64(c)	2:00	D	M	AG/MF	X	2.6	X	X	X	3600	•
0136	35	716056	Threaded 3/4-16	2-27/64(c)	2:00	D	M	AG/MF	X	2.6	X	X	X	3600	•
0138		716057	Tapered, tapped 5/16-24	2-13/16(c)	2:00	D	M	AG	X	2.6	X	X	X	3750	•

• Ball bearing PTO and magneto side