

PARTS MANUAL

Model

EX270D52220

EX300D52010

**for Coleman
ENGINES**

PUB-EP
Rev. 05/05

Robin America, Inc.

940 Lively Blvd. • Wood Dale, IL 60191 • Phone: 630-350-8200 • Fax: 630-350-8212
e-mail: sales@robinamerica.com • www.robinamerica.com

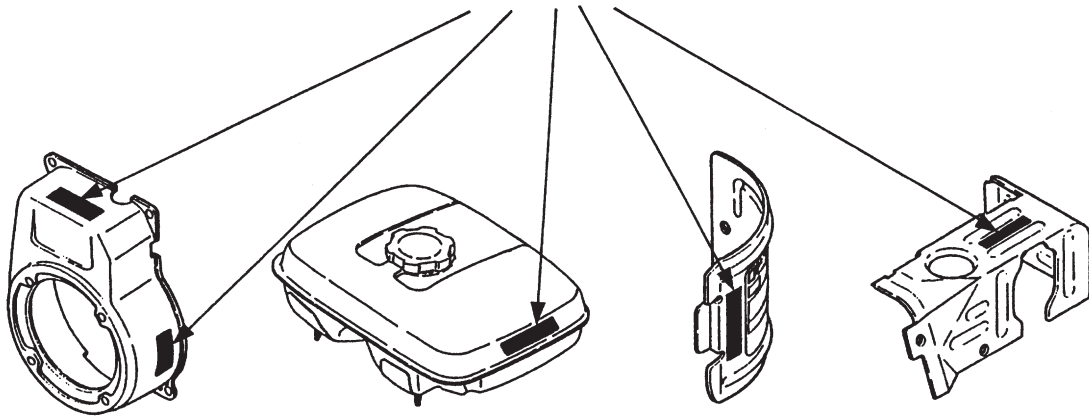
© Copyright 2005 Robin America, Inc.

HOW TO USE THIS MANUAL

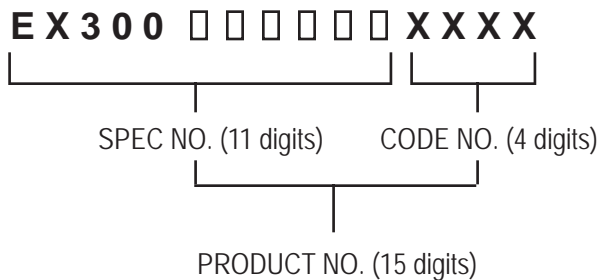
Robin engines are identified by MODEL, SPECIFICATION, and CODE NUMBER. For each model there may be many different versions called specifications. Each specification will be unique in some way. The difference may only be the paint color or it may have a different type of PTO or some other significant difference.

In order to identify the correct service part number, it is important to confirm the specification and code numbers for your engine. The specification and code number together are known as the PRODUCT NUMBER.

All Robin 4 cycle engines have a Product Number label similar to the label illustrated below.



The Product Number Label has a 15 digit alphanumeric string that consists of the SPECIFICATION (SPEC) number (11 digits) and the CODE number (4 digits). Please note the illustration below:



MANUAL LAYOUT

1— SECTION 6 FUEL GROUP

2— FIG. 600

1— SECTION 6 FUEL GROUP

REF.	PART NO.	DESCRIPTION	QTY.	REMARKS	FROM-TO	FIG.
10	267-60103-01	FUEL TANK CP	1	YD, YS TYPE, BLACK		600
27	073-20039-00	LABEL, WARNING	1	YD, YS TYPE		600
30	043-04300-15	FUEL TANK CAP CP	1			600
31	267-95201-03	LABEL, EMISSION	1	YD, YS TYPE		600
40	064-13600-10	FUEL FILTER	1			600
50	064-20021-01	FUEL STRAINER AY	1			600
-1	064-20002-20	FILTER	1			600
-2	064-20002-30	GASKET	1			600
-3	064-20019-10	CUP	1			600

1. SECTION NAME Parts are broadly classified according to their functions. Refer to the Group Index (table of contents) for respective section name.
2. FIG. No. The FIG. number indexes the reference and part numbers to the illustration. Figure numbers that vary only in the tens place (i.e.: 700 and 710) are in a group of the same section (i.e.: Electrical Device Group).
3. REF. No. The Reference number identifies the part illustration with the corresponding part number in the part list.
4. SUBASSEMBLY SUBASSEMBLY parts of part assembly are listed below the assembly part. The subassembly part reference number is indicated by the number led by "-" such as "-1", "-2".
5. PART NUMBER It is the number assigned for sales unit. Use the PART No. when making an order.
6. DESCRIPTION It is designation of the part.
7. QTY. Quantity of each part used for each product.
8. REMARKS This gives a distinctive feature and/or a supplementary comment for the type, the specification, and the part concerned. It also shows part number(s) interchangeable for the part.
9. FROM-TO This section shows the CODE No. to indicate the history of progress in which improved parts have been introduced in the product. The FROM-TO CODE No. helps to identify PART No. being employed in the product concerned. See the examples below:
 - The part is used in the product irrespective of CODE No.
 - 2101- The part is used in the products with CODE No. of 2101 and after this number.
 - 2100 The part is used in the products with CODE No. of 2100 and before this number.

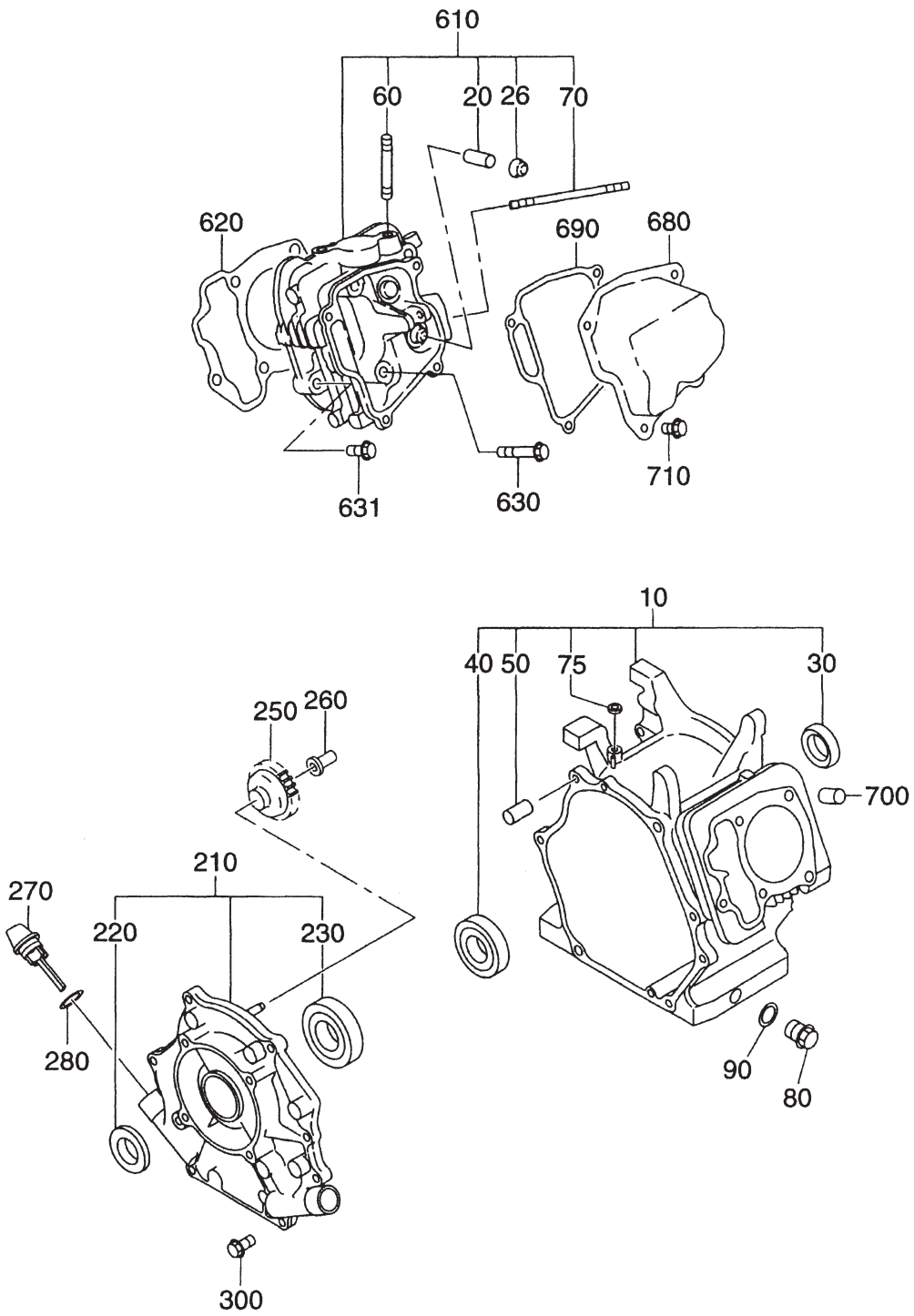
GROUP INDEX

Group Name	Page
CRANKCASE GROUP	6
CRANKSHAFT GROUP	8
INTAKE and EXHAUST GROUP.....	10
GOVERNOR GROUP	14
COOLING and STARTING GROUP	16
FUEL, LUBRICANT GROUP	20
ELECTRIC DEVICE GROUP	22

INDEX OF DESCRIPTION SYMBOLS			
SYMBOL	DESCRIPTION	SYMBOL	DESCRIPTION
AY	ASSEMBLY	P=	PITCH (in mm)
CP.....	COMPLETE	P.T.O. (PTO)	POWER TAKE OFF
EX.....	EXPORT (from Japan)	REF.....	REFERENCE
FIG.....	FIGURE	R.H. (RH).....	RIGHT HAND SIDE
FR.....	FRONT	RR.	REAR
"	INCH	STD.	STANDARD
INCL.	INCLUDE	SW.....	SWITCH
-L.....	LITER	T=	THICKNESS (in mm)
L=	LENGTH (in. mm)	UN	UNIT
L.H. (LH).....	LEFT-HAND SIDE	U.S.....	UNDER SIZE
MECH.....	MECHANICAL	~V	VOLTAGE
NO (NON).....	NONE	~W	WATT
OPT.....	OPTIONAL	W/	WITH
O.S.	OVER SIZE	W/O	WITHOUT

SECTION 1 CRANKCASE GROUP

FIG. 100

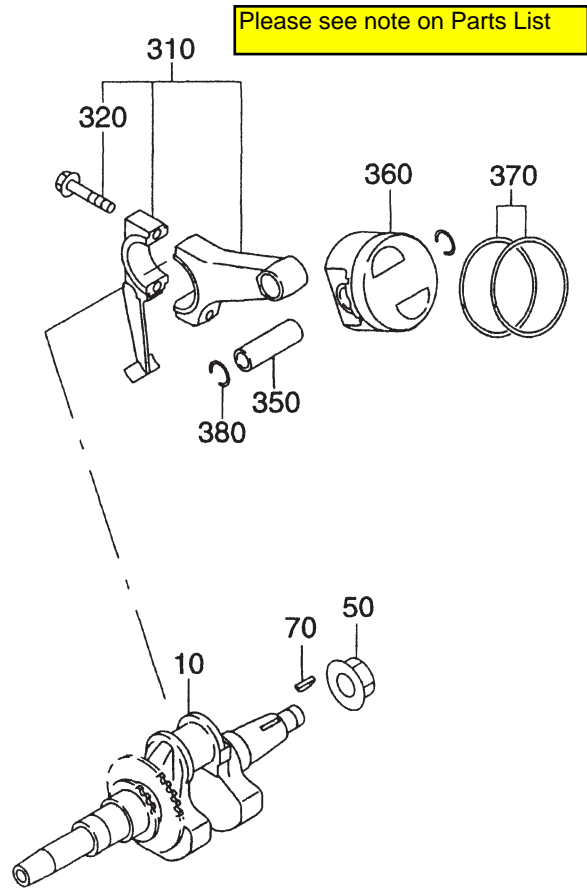


SECTION 1 CRANKCASE GROUP

REF.	PART NO.	DESCRIPTION	QTY.	REMARKS	FROM-TO	FIG.
10	279-10102-51	CRANKCASE	1	EX27		100
	291-10102-01	CRANKCASE	1	EX30		100
20	237-14202-03	VALVE GUIDE	2			100
26	277-16010-01	STEM SEAL	1			100
30	044-03001-60	OIL SEAL	1			100
40	060-03003-41	BALL BEARING	1			100
50	277-15011-03	PIPE KNOCK	2			100
60	010-50802-90	STUD	2			100
70	010-50604-10	STUD	2			100
75	044-00600-20	OIL SEAL	1			100
80	040-11400-30	PLUG	2			100
90	021-11400-20	GASKET	2			100
210	279-11002-11	MAIN BEARING COVER	1			100
220	044-03001-60	OIL SEAL	1			100
230	060-03003-70	BALL BEARING	1			100
250	277-45004-H1	GOVERNOR GEAR	1			100
260	277-41901-03	GOVERNOR SLEEVE	1			100
270	279-63601-13	OIL GAUGE	2			100
280	021-32000-50	GASKET	2			100
300	001-04083-50	FLANGE BOLT	7			100
610	279-13002-31	CYLINDER HEAD	1			100
620	279-15001-33	GASKET, cylinder head	1			100
630	001-00802-40	FLANGE BOLT	4			100
631	011-00803-10	FLANGE BOLT	1			100
680	277-15501-01	ROCKER COVER	1	Old Style (Robin logo)		100
	277-15503-01	ROCKER COVER	1	New Style (OHC)		100
690	277-16001-13	GASKET, rocker cover	1			100
700	277-15011-03	PIPE KNOCK	2			100
710	011-00600-20	FLANGE BOLT	4			100
960	279-99001-27	GASKET SET	1			100

SECTION 2 CRANKSHAFT GROUP

FIG. 200

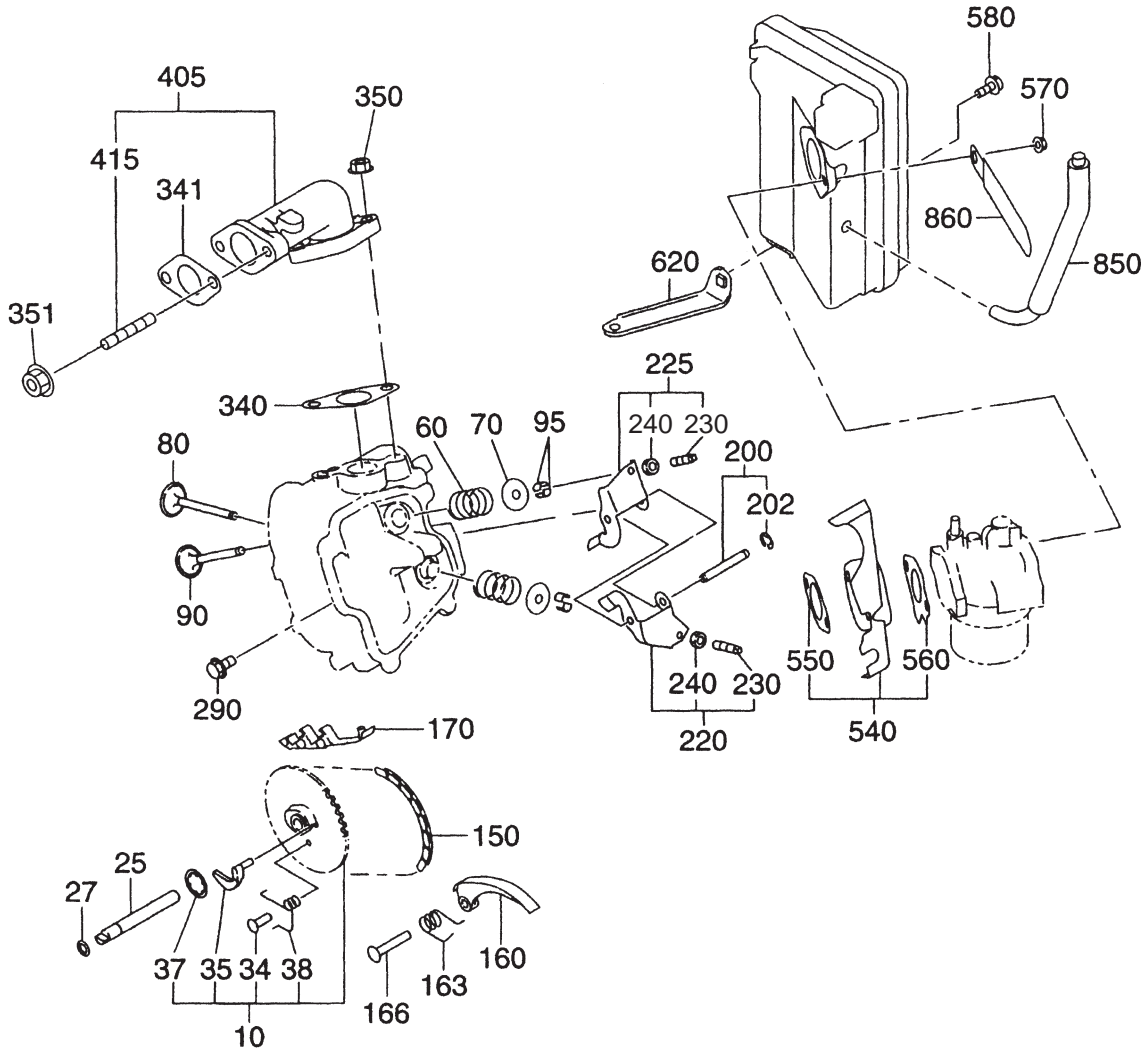


SECTION 3 INTAKE and EXHAUST GROUP

FIG. 300

Ref #80 the part # 279-3401-H3 Intake Valve is incorrect.

The correct part# is 279-33401-H3.



SECTION 3 INTAKE and EXHAUST GROUP

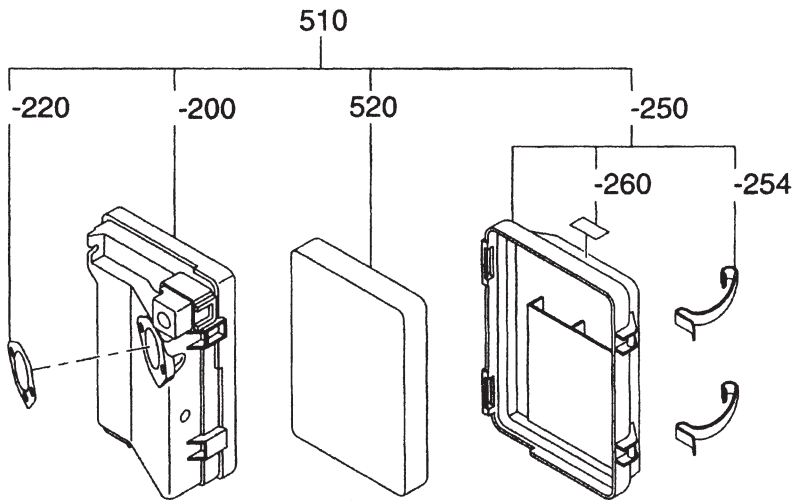
REF.	PART NO.	DESCRIPTION	QTY.	REMARKS	FROM-TO	FIG.
10	279-31602-11	CAMSHAFT	1			300
25	277-35101-03	PIN, camshaft	1			300
27	024-00600-10	O RING	1			300
34	277-38601-03	PIN, spring	1			300
35	279-36401-03	RELEASE LEVER	1			300
37	277-36501-03	CLIP	1			300
38	279-38701-13	RETURN SPRING	1			300
60	279-33601-03	VALVE SPRING	2			300
70	269-33701-03	SPRING RETAINER	2			300
80	279-3401-H3	INTAKE VALVE	1			300
90	279-33501-H3	EXHAUST VALVE	1			300
95	132-10KA0-31	COLLET VALVE	4			300
150	279-35601-11	TIMING CHAIN	1			300
160	277-36911-03	TENTIONER	1			300
163	277-37101-03	SPRING, tentioner	1			300
166	277-36902-03	PIN, tentioner	1			300
170	277-36913-13	CHAIN GUIDE	1			300
200	277-35002-01	PIN, rocker	1			300
202	003-13050-00	CLIP	1			300
220	277-36201-00	ROCKER ARM, intake	1			300
225	277-36202-00	ROCKER ARM, exhaust	1			300
230	014-90500-20	ADJUST SCREW	2			300
240	017-00500-30	NUT	2			300
290	011-00600-20	FLANGE BOLT	1			300
340	277-35201-13	GASKET, muffler	1			300
341	277-35201-01	GASKET, exhaust	1			300
350	980-20082-80	FLANGE NUT	2			300
351	980-20082-80	FLANGE NUT	2			300
405	277-34001-01	EXHAUST PIPE	1			300
415	010-50802-90	STUD	2			300
540	279-32902-J1	INSULATOR	2			300
550	279-35903-J3	GASKET 2, insulator	1			300
560	279-35902-J3	GASKET 1, insulator	1			300
570	002-38060-00	FLANGE NUT	2			300
580	011-00600-50	FLANGE BOLT	1			300
620	279-39001-01	BRACKET A/C	1			300
850	291-66001-00	RUBBER PIPE	1	EX30		300
860	056-60002-50	CLAMP	1	EX30		300

SECTION 3 INTAKE and EXHAUST GROUP

FIG. 310

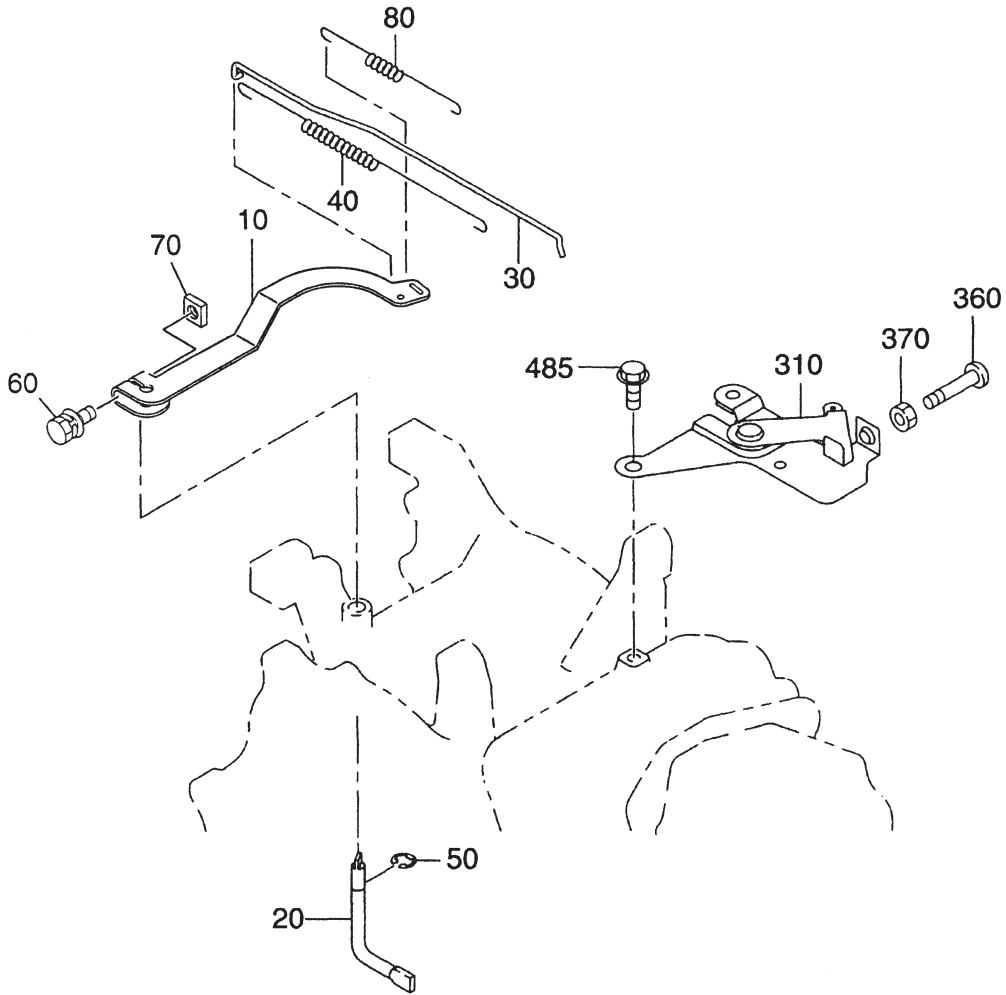
EX27

EX30



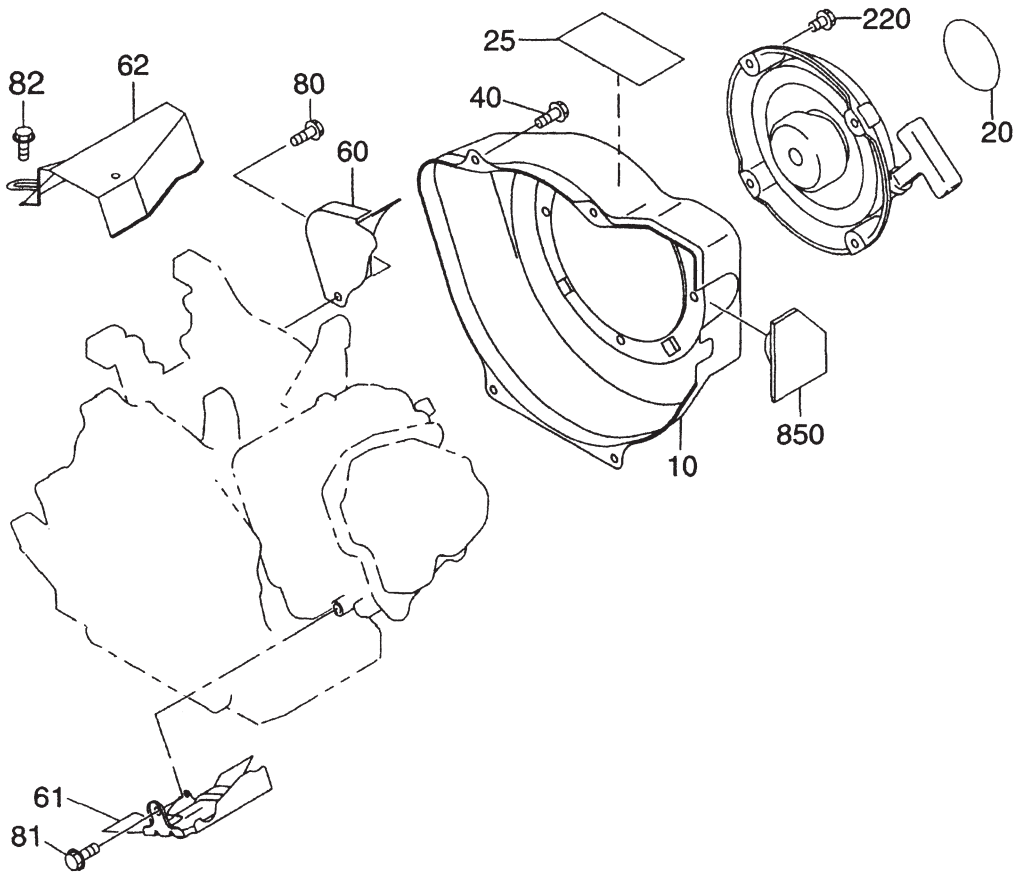
SECTION 4 GOVERNOR GROUP

FIG. 400



SECTION 5 COOLING and STARTING GROUP

FIG. 500



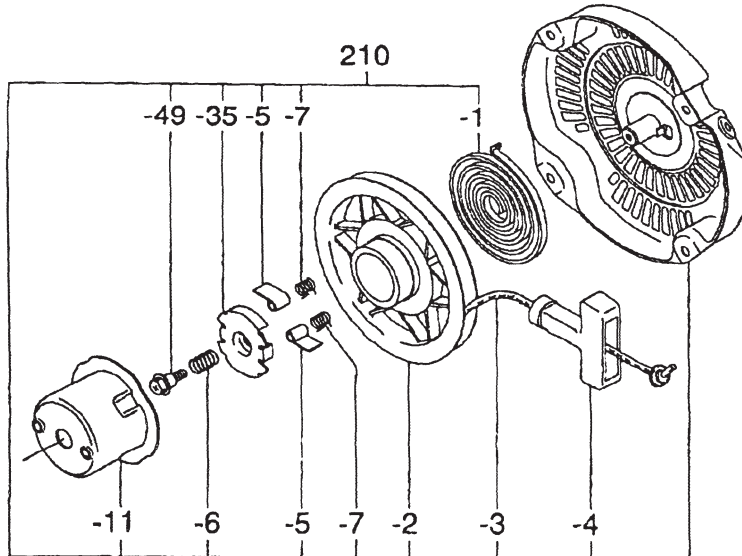
SECTION 5 COOLING and STARTING GROUP

REF.	PART NO.	DESCRIPTION	QTY.	REMARKS	FROM-TO	FIG.
10	279-51202-01	BLOWER HOUSING	1	EX27		500
	279-51203-01	BLOWER HOUSING	1	EX30		500
20	073-20054-70	LABEL, trademark	1			500
25	073-20051-81	LABEL, warning	1			500
40	011-00600-30	FLANGE BOLT	4			500
60	279-52711-11	BAFFLE 1, case	1			500
61	279-52702-13	BAFFLE 2, head	1			500
62	277-55001-11	DUCT, case	1			500
80	001-65081-20	BOLT	1			500
81	011-00600-20	FLANGE BOLT	1			500
82	011-00600-20	FLANGE BOLT	3			500
220	011-00600-10	BOLT and WASHER AY	4			500
850	279-59604-13	SPONGE 4	1	EX30		500

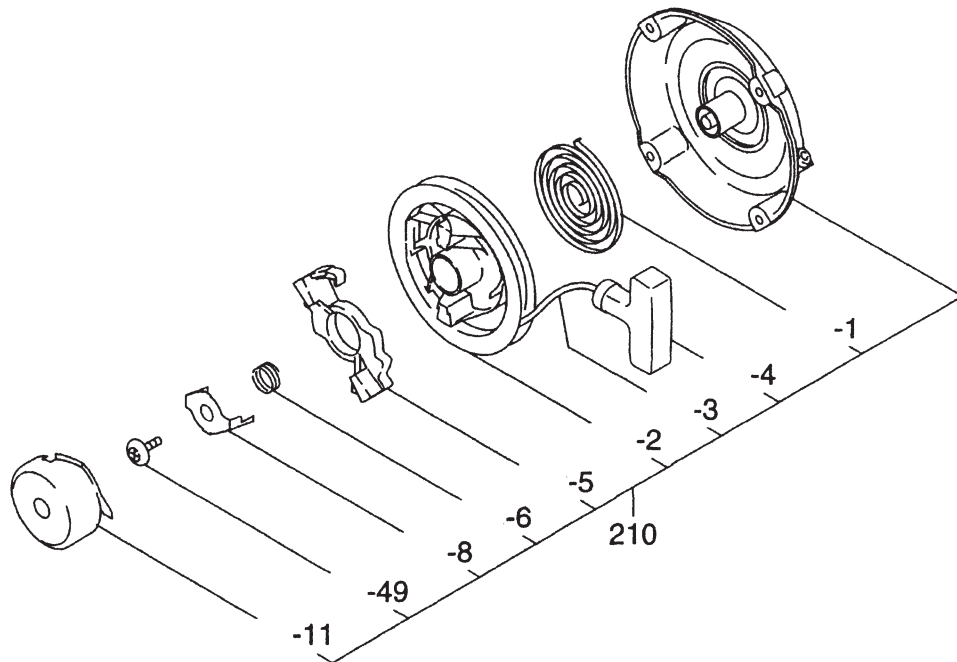
SECTION 5 COOLING and STARTING GROUP

FIG. 510

EX27



EX30



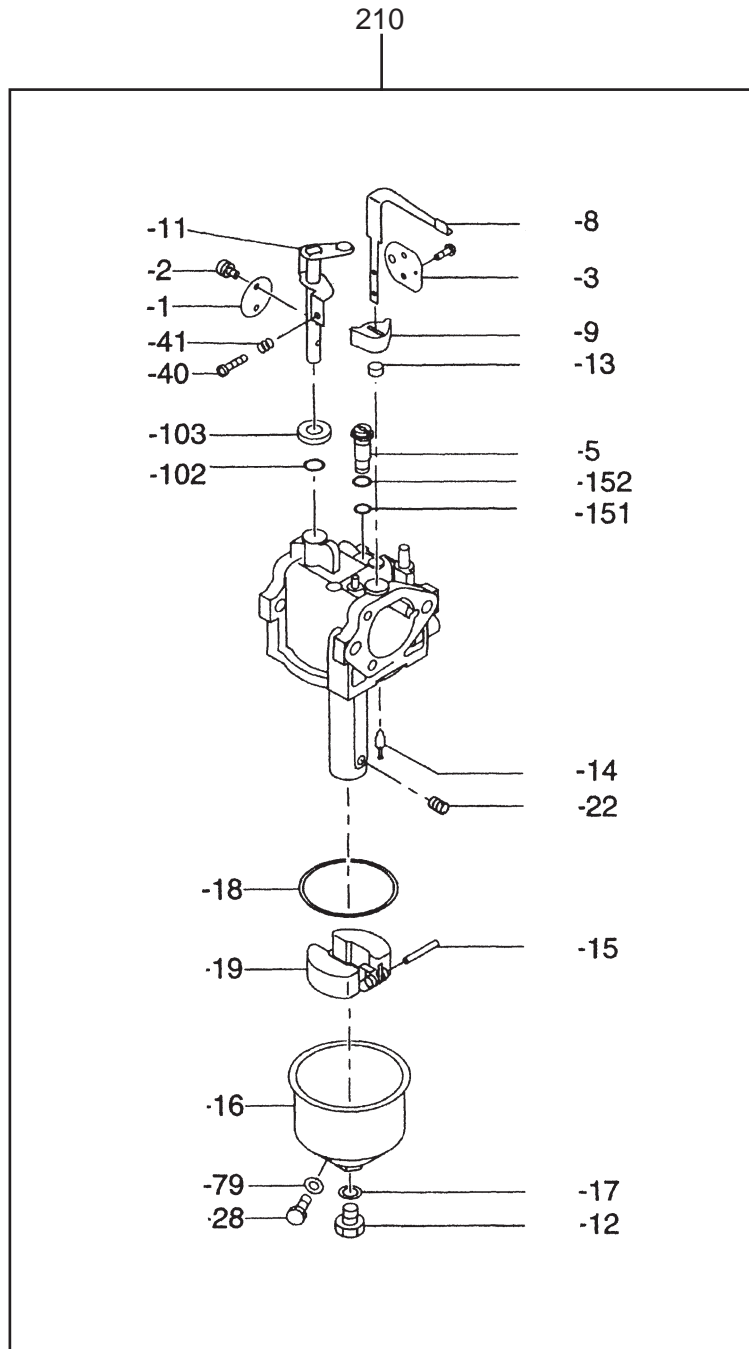
SECTION 5

COOLING and STARTING GROUP

REF.	PART NO.	DESCRIPTION	QTY.	REMARKS	FROM-TO	FIG.
210	279-50202-00	RECOIL STARTER AY	1	EX27		510
	279-50301-00	RECOIL STARTER AY		EX30		510
-1	226-50716-08	SPIRAL SPRING	1			510
-2	279-50120-08	REEL	1	EX27		510
	277-50121-08	REEL		EX30		510
-3	279-50110-08	STARTER ROPE	1			510
-4	226-50701-08	STARTER KNOB	1			510
-5	279-50125-08	RATCHET	2	EX27		510
	281-50325-08	RATCHET		EX30		510
-6	226-50731-08	FRICTION SPRING	1	EX27		510
	281-50330-08	FRICTION SPRING		EX30		510
-7	226-50752-08	RATCHET SPRING	1	EX27		510
-8	281-50340-08	FRICTION PLATE	1	EX30		510
-11	279-50145-08	STARTER PULLEY	1	EX27		510
	279-50148-08	STARTER PULLEY		EX30		510
-35	226-50741-08	FRICTION PLATE	1	EX27		510
-49	226-50753-08	CENTER SCREW	1	EX27		510
	281-50351-08	CENTER SCREW		EX30		510

SECTION 6 FUEL, LUBRICATION GROUP

FIG. 610

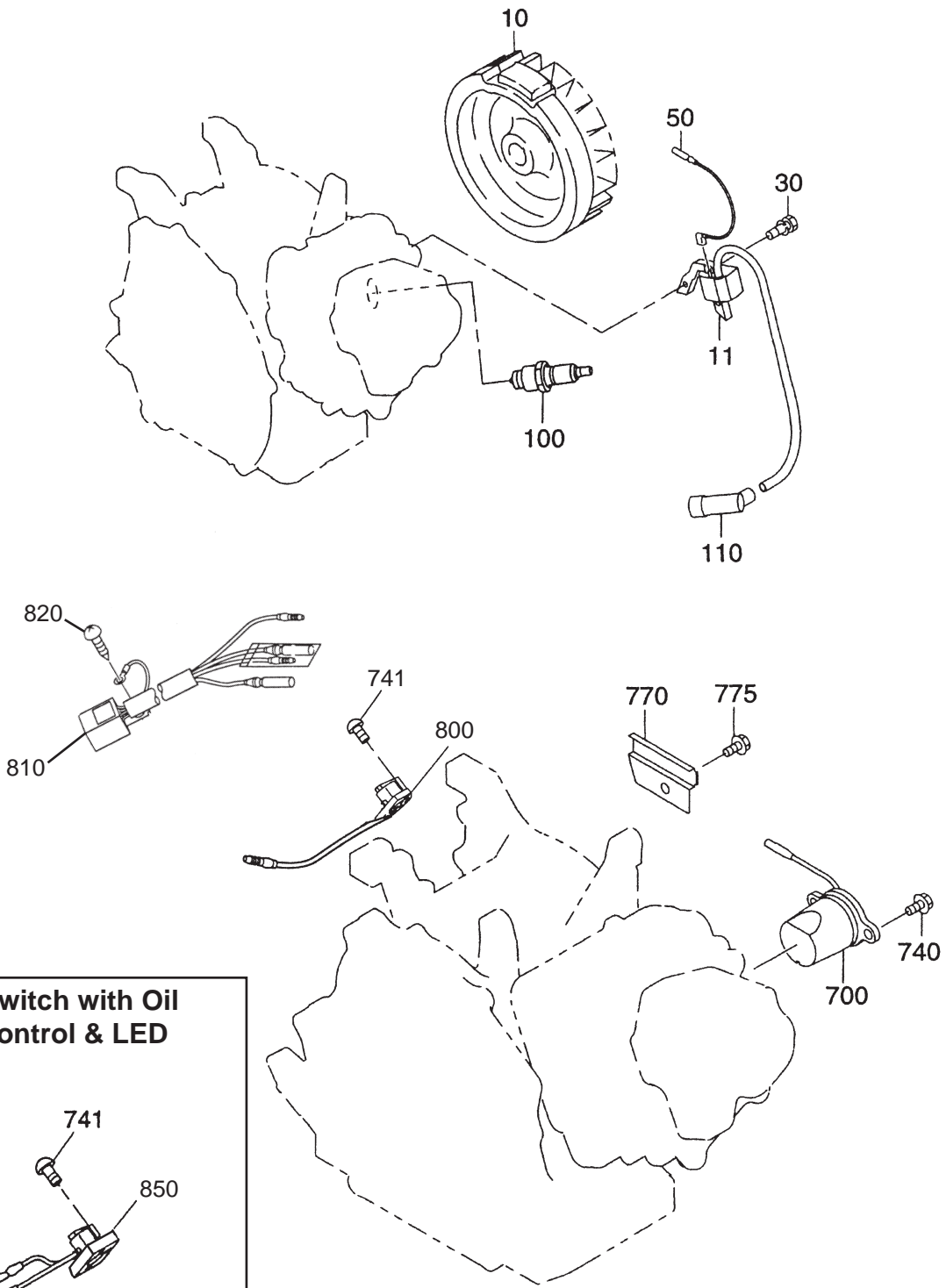


SECTION 6 FUEL, LUBRICATION GROUP

REF.	PART NO.	DESCRIPTION	QTY.	REMARKS	FROM-TO	FIG.
210	279-62304-40	CARBURETOR	1			600
-1	279-62535-08	VALVE THROTTLE	1			600
-2	251-62450-08	SCREW	4			600
-3	279-62526-08	VALVE CHOKE	1			600
-5	279-62420-08	SLOW JET	1			600
-8	279-62570-18	CHOKE LEVER	1			600
-9	279-62563-18	COLLAR SHAFT 1	1			600
-11	279-62530-08	THROTTLE SHAFT AY	1			600
-12	251-62453-08	SCREW	1			600
-13	279-62564-08	COLLAR SHAFT 2	1			600
-14	279-62500-08	NEEDLE VALVE AY	1			600
-15	279-62515-08	FLOAT PIN LEVER	1			600
-16	285-62550-08	FLOAT CHAMBER	1			600
-17	251-62350-08	GASKET	1			640
-18	279-62540-08	CHAMBER GASKET	1			600
-19	279-62505-08	FLOAT AY	1			600
-22	279-62400-08	MAIN JET	1			600
-28	285-62551-08	DRAIN SCREW	1			600
-40	279-62353-18	ADJUSTING SCREW	1			600
-41	279-62445-08	SPRING	1			600
-79	285-62552-08	PACKING	1			600
-102	279-62561-08	BUSH	1			600
-103	279-62562-08	COLLAR	1			600
-151	279-62451-08	O RING	1			600
-152	279-62452-08	O RING	1			600

SECTION 7 ELECTRIC DEVICE GROUP

FIG. 700



**Ignition switch with Oil
Sensor Control & LED**

The inset diagram shows a close-up of the ignition switch assembly. It includes a component (741) connected to a housing (850). A cable (860) is also shown.

PRINTED IN THE USA