

# **PARTS MANUAL**

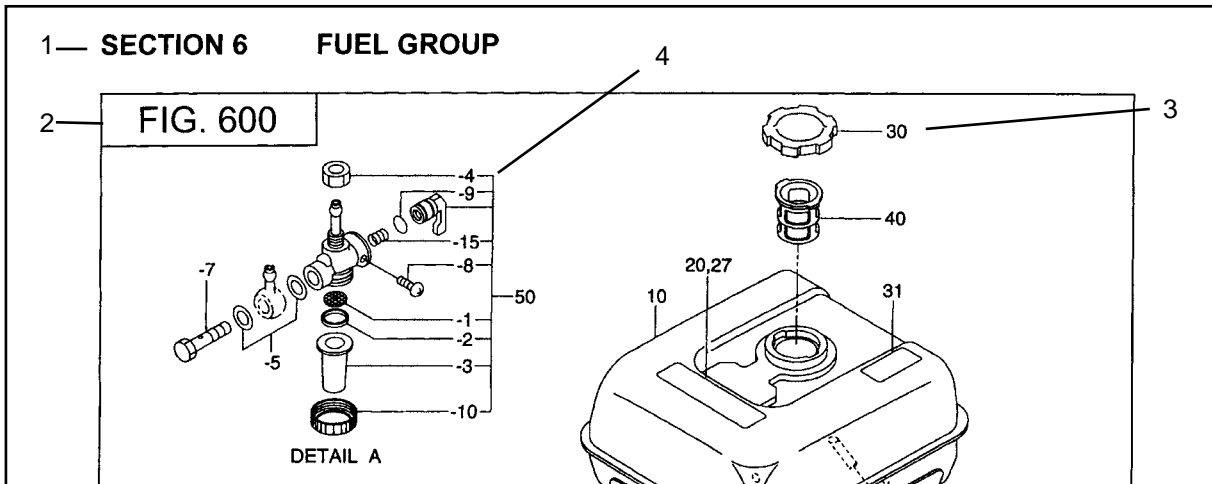
**Models**

**EX27**

**ENGINE**

PUB-EP1679  
Rev. 02/04

# MANUAL LAYOUT



| REF. | PART NO.     | DESCRIPTION      | QTY. | REMARKS            | FROM-TO | FIG. |
|------|--------------|------------------|------|--------------------|---------|------|
| 10   | 267-60103-01 | FUEL TANK CP     | 1    | YD, YS TYPE, BLACK |         | 600  |
|      | 267-60101-01 | FUEL TANK CP     | 1    | YELLOW             |         | 600  |
| 27   | 073-20039-00 | LABEL, WARNING   | 1    | YD, YS TYPE        |         | 600  |
| 30   | 043-04300-15 | FUEL TANK CAP CP | 1    |                    |         | 600  |
| 31   | 267-95201-03 | LABEL, EMISSION  | 1    | YD, YS TYPE        |         | 600  |
| 40   | 064-13600-10 | FUEL FILTER      | 1    |                    |         | 600  |
| 50   | 064-20021-01 | FUEL STRAINER AY | 1    |                    |         | 600  |
| -1   | 064-20002-20 | FILTER           | 1    |                    |         | 600  |
| -2   | 064-20002-30 | GASKET           | 1    |                    |         | 600  |
| -3   | 064-20019-10 | CUP              | 1    |                    |         | 600  |

1. SECTION NAME Parts are broadly classified according to their functions. Refer to the Group Index (table of contents) for respective section name.
2. FIG. No. The FIG. number indexes the reference and part numbers to the illustration. Figure numbers that vary only in the tens place (i.e.: 700 and 710) are in a group of the same section (i.e.:Electrical Device Group).
3. REF. No. The Reference number identifies the part illustration with the corresponding part number in the part list.
4. SUBASSEMBLY SUBASSEMBLY parts of part assembly are listed below the assembly part. The subassembly part reference number is indicated by the number led by "-" such as "-1", "-2".
5. PART NUMBER It is the number assigned for sales unit. Use the PART No. when making an order.
6. DESCRIPTION It is designation of the part.
7. QTY. Quantity of each part used for each product.
8. REMARKS This gives a distinctive feature and/or a supplementary comment for the type, the specification, and the part concerned. It also shows part number(s) interchangeable for the part.
9. FROM-TO This section shows the CODE No. to indicate the history of progress in which improved parts have been introduced in the product. The FROM-TO CODE No. helps to identify PART No. being employed in the product concerned. See the examples below:
  - The part is used in the product irrespective of CODE No.
  - 2101- The part is used in the products with CODE No. of 2101 and after this number.
  - 2100 The part is used in the products with CODE No. of 2100 and before this number.

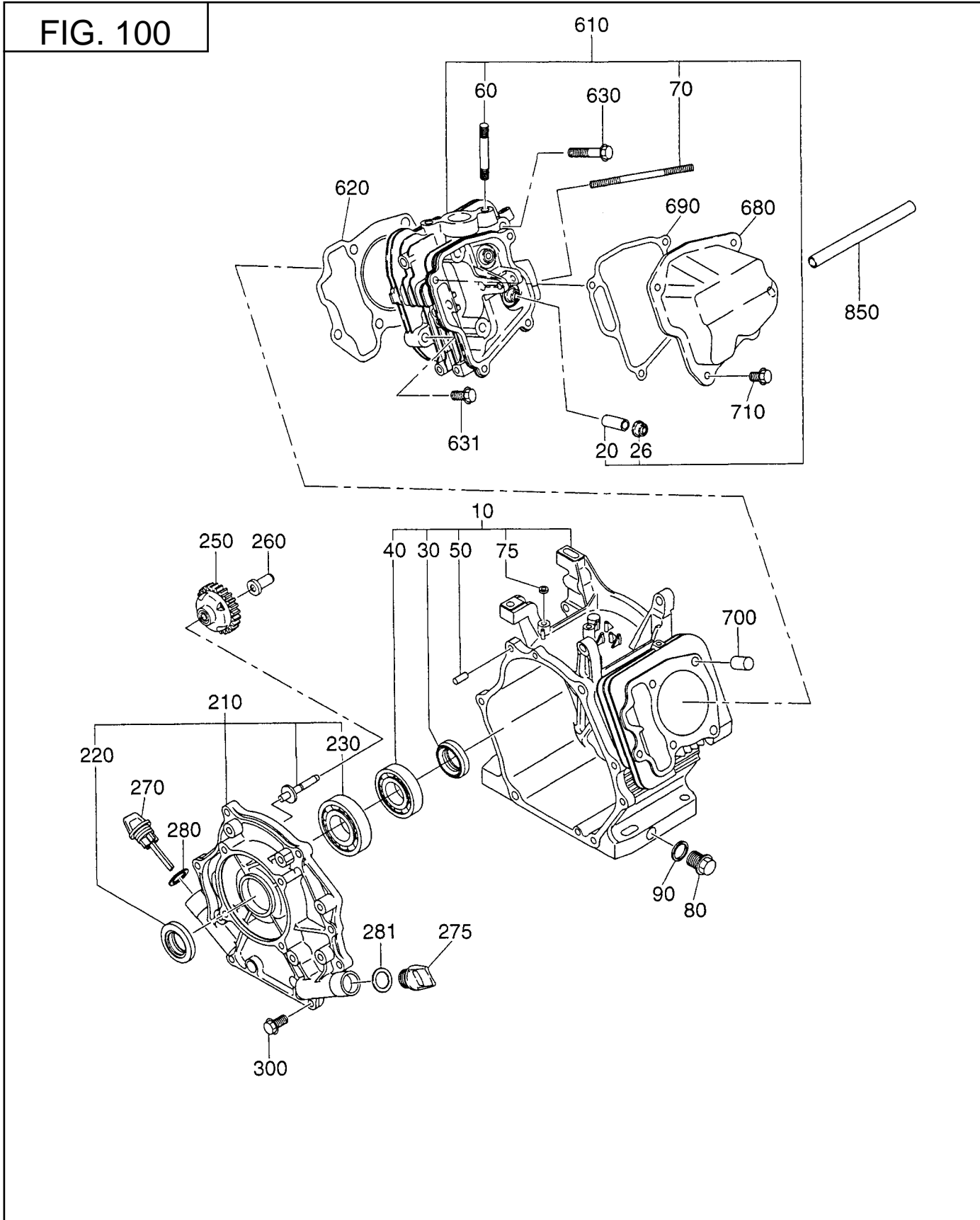
# GROUP INDEX

| Group Name                       | Page |
|----------------------------------|------|
| CRANKCASE GROUP .....            | 6    |
| CRANKSHAFT GROUP .....           | 8    |
| INTAKE and EXHAUST GROUP .....   | 10   |
| GOVERNOR GROUP .....             | 14   |
| COOLING and STARTING GROUP ..... | 16   |
| FUEL, LUBRICANT GROUP .....      | 18   |
| CARBURETOR GROUP .....           | 20   |
| ELECTRIC DEVICE GROUP .....      | 22   |
| ACCESSORY GROUP .....            | 24   |

| INDEX OF DESCRIPTION SYMBOLS |                     |                    |                   |
|------------------------------|---------------------|--------------------|-------------------|
| SYMBOL                       | DESCRIPTION         | SYMBOL             | DESCRIPTION       |
| AY .....                     | ASSEMBLY            | P= .....           | PITCH (in mm)     |
| CP .....                     | COMPLETE            | P.T.O. (PTO) ..... | POWER TAKE OFF    |
| EX .....                     | EXPORT (from Japan) | REF .....          | REFERENCE         |
| FIG .....                    | FIGURE              | R.H. (RH) .....    | RIGHT HAND SIDE   |
| FR .....                     | FRONT               | RR .....           | REAR              |
| " .....                      | INCH                | STD. ....          | STANDARD          |
| INCL. ....                   | INCLUDE             | SW .....           | SWITCH            |
| -L .....                     | LITER               | T= .....           | THICKNESS (in mm) |
| L= .....                     | LENGTH (in. mm)     | UN .....           | UNIT              |
| L.H. (LH) .....              | LEFT-HAND SIDE      | U.S. ....          | UNDER SIZE        |
| MECH .....                   | MECHANICAL          | ~V .....           | VOLTAGE           |
| NO (NON) .....               | NONE                | ~W .....           | WATT              |
| OPT .....                    | OPTIONAL            | W/ .....           | WITH              |
| O.S. ....                    | OVER SIZE           | W/O .....          | WITHOUT           |

SECTION 1 CRANKCASE GROUP

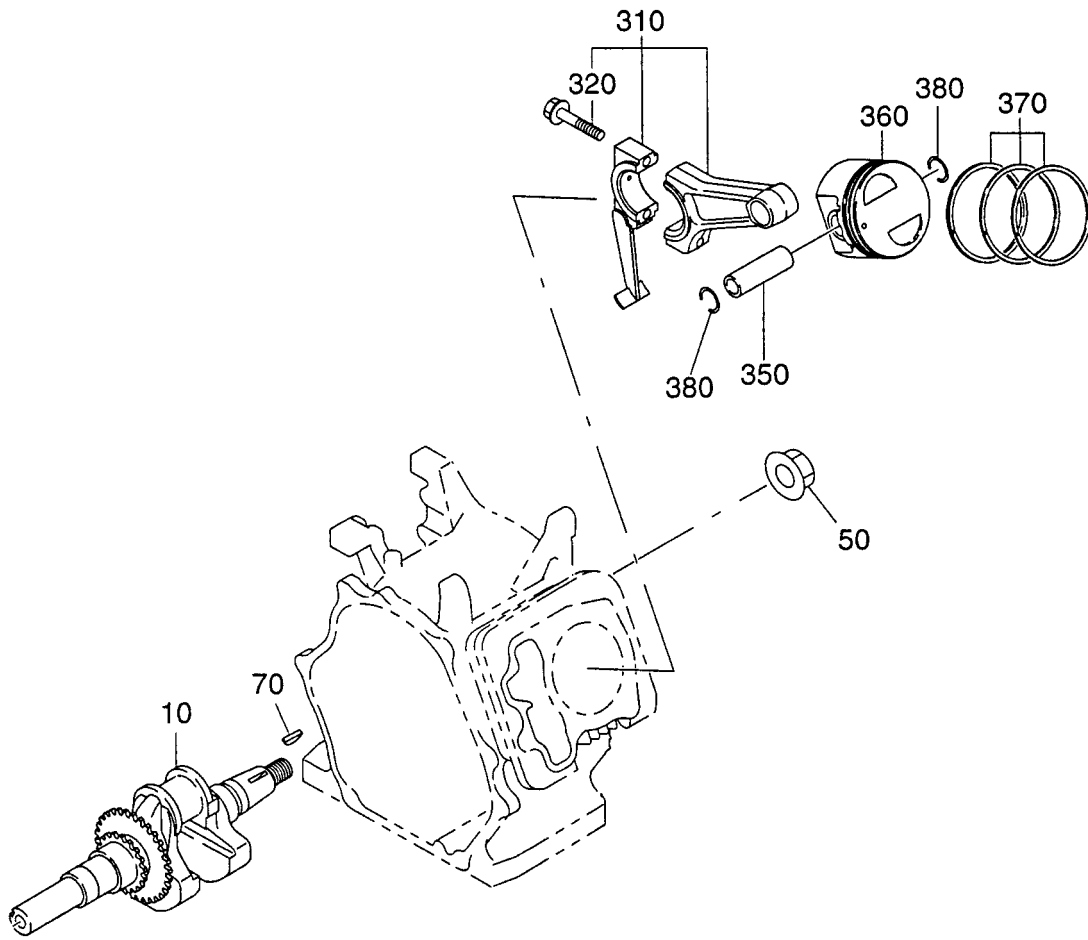
FIG. 100





SECTION 2 CRANKSHAFT GROUP

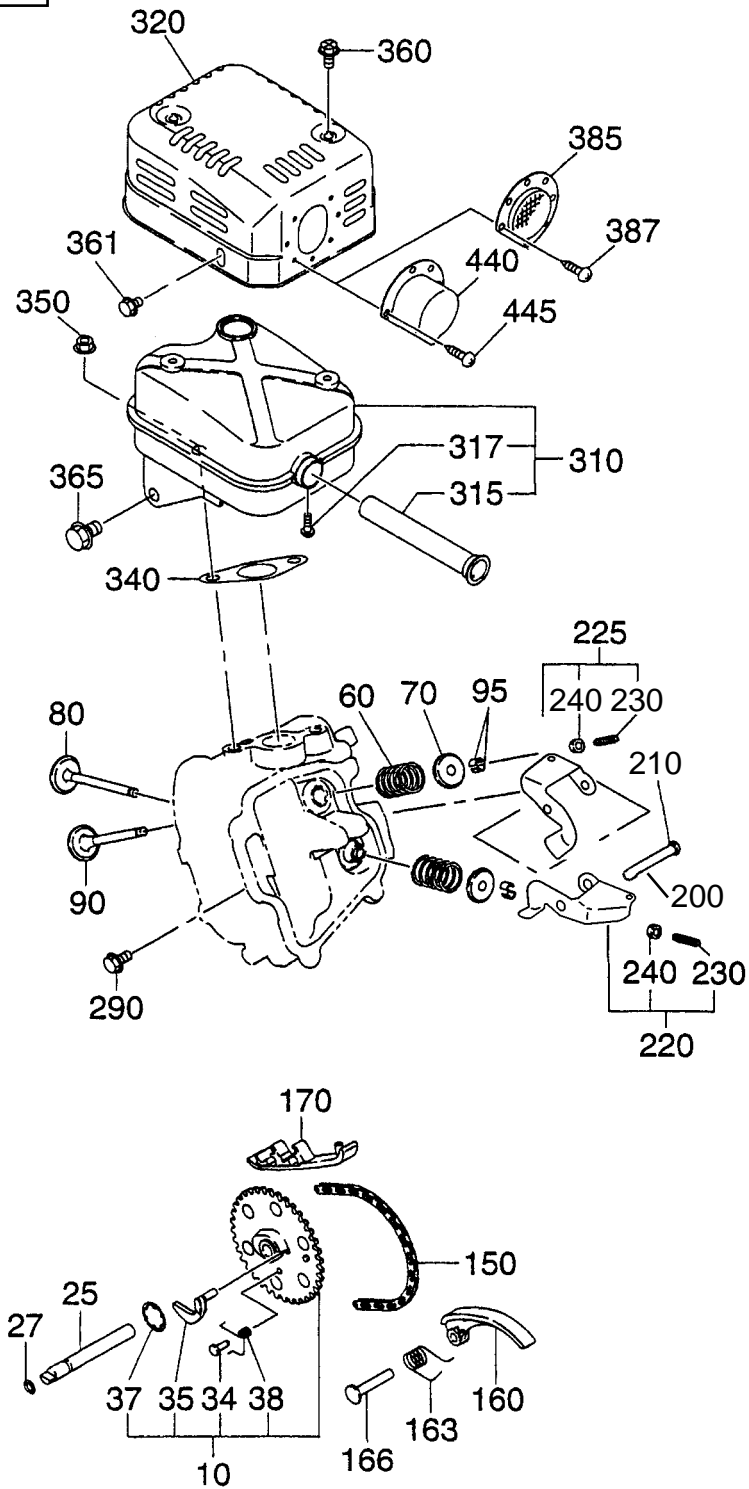
FIG. 200





SECTION 3 INTAKE and EXHAUST GROUP - NEW STYLE

FIG. 300



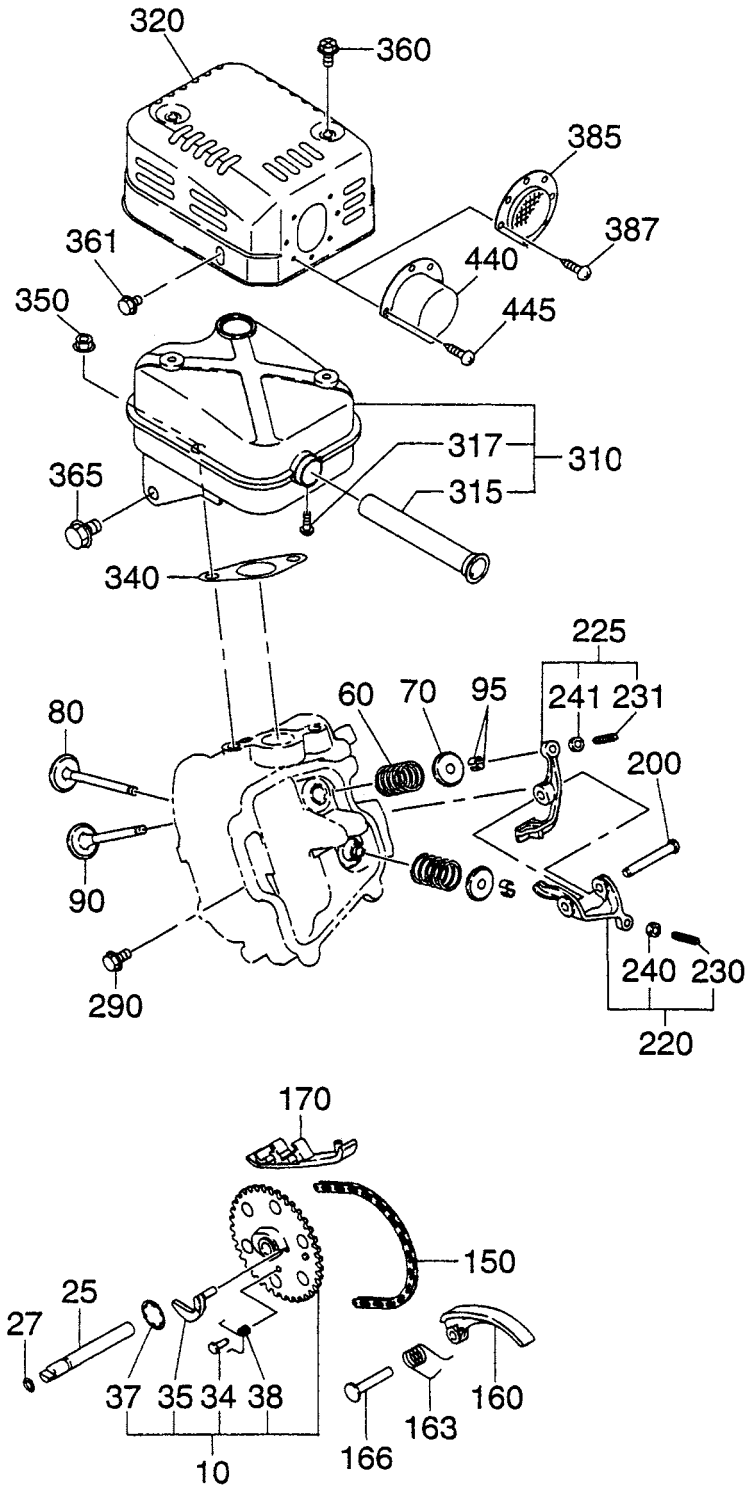




SECTION 3

INTAKE and EXHAUST GROUP - OLD STYLE

FIG. 300

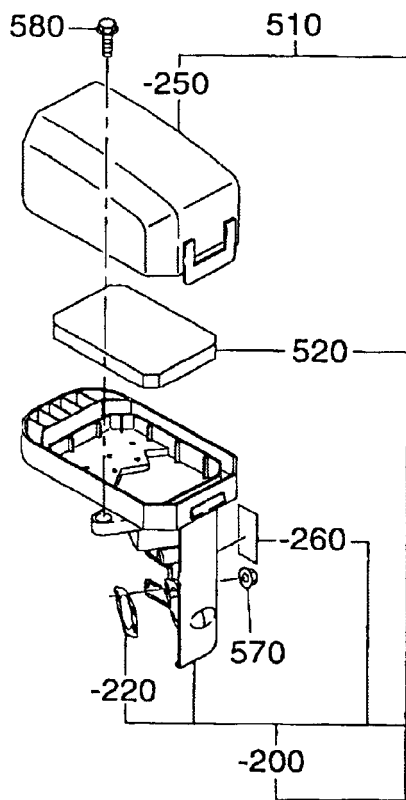




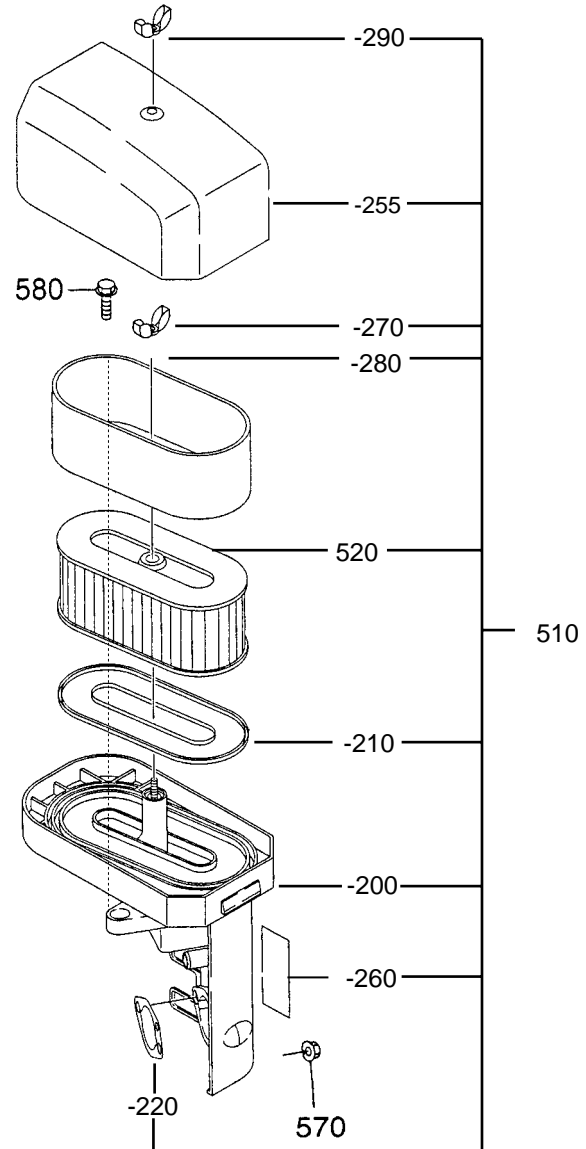
# SECTION 3 INTAKE and EXHAUST GROUP

## FIG. 310

**A**



**B**

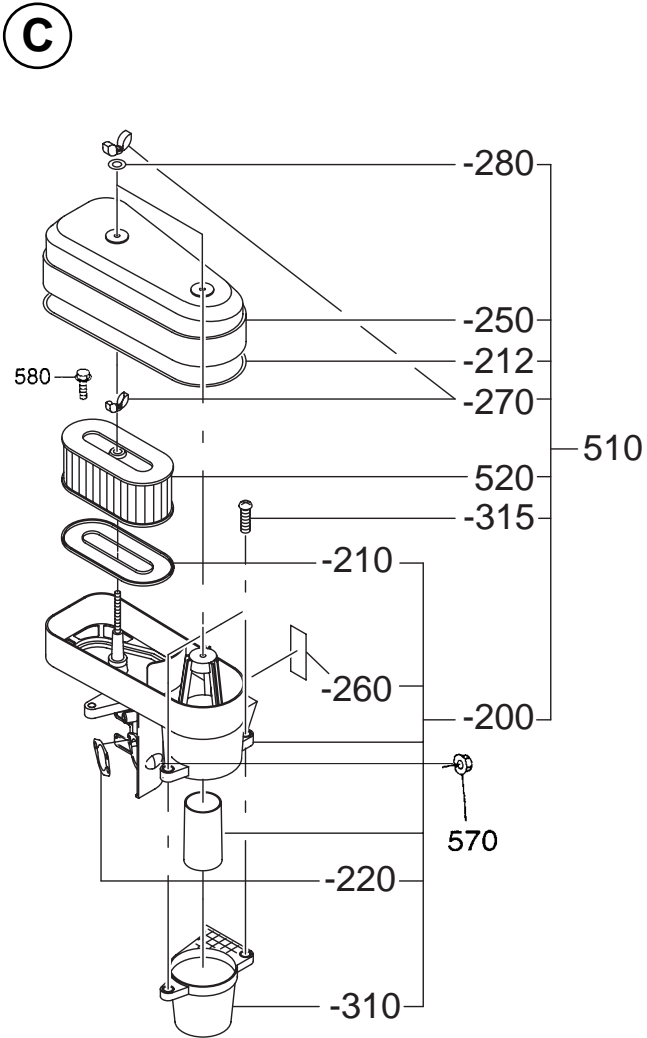




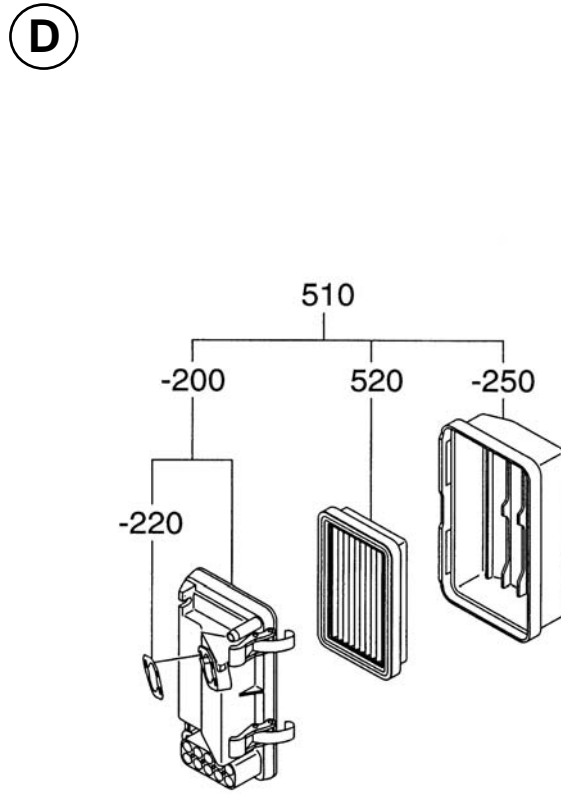
**SECTION 3 INTAKE and EXHAUST GROUP**

**FIG. 320**

**Cyclone Pre-Cleaner**



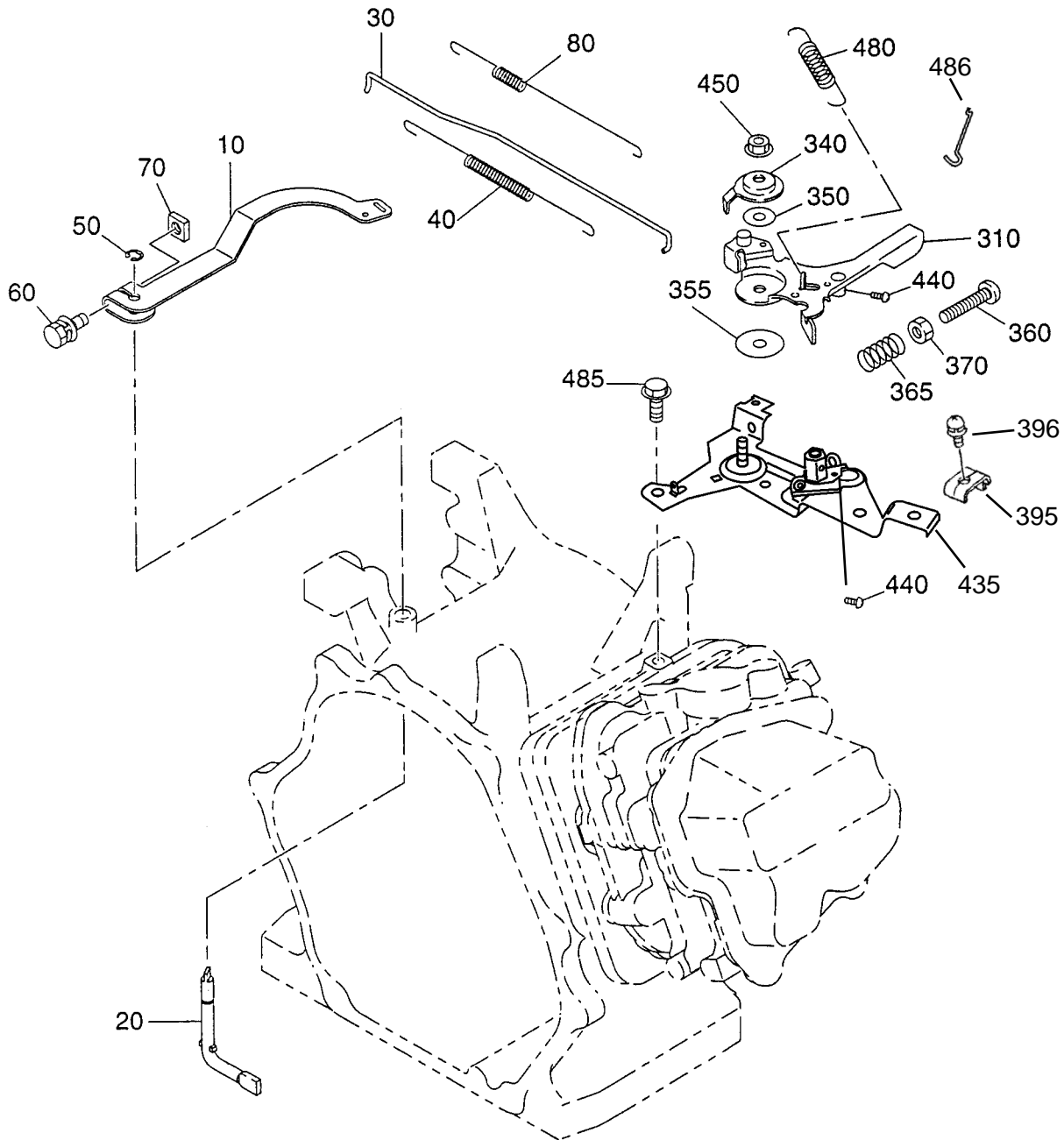
**Low Profile**





SECTION 4 GOVERNOR GROUP - NEW STYLE

FIG. 400

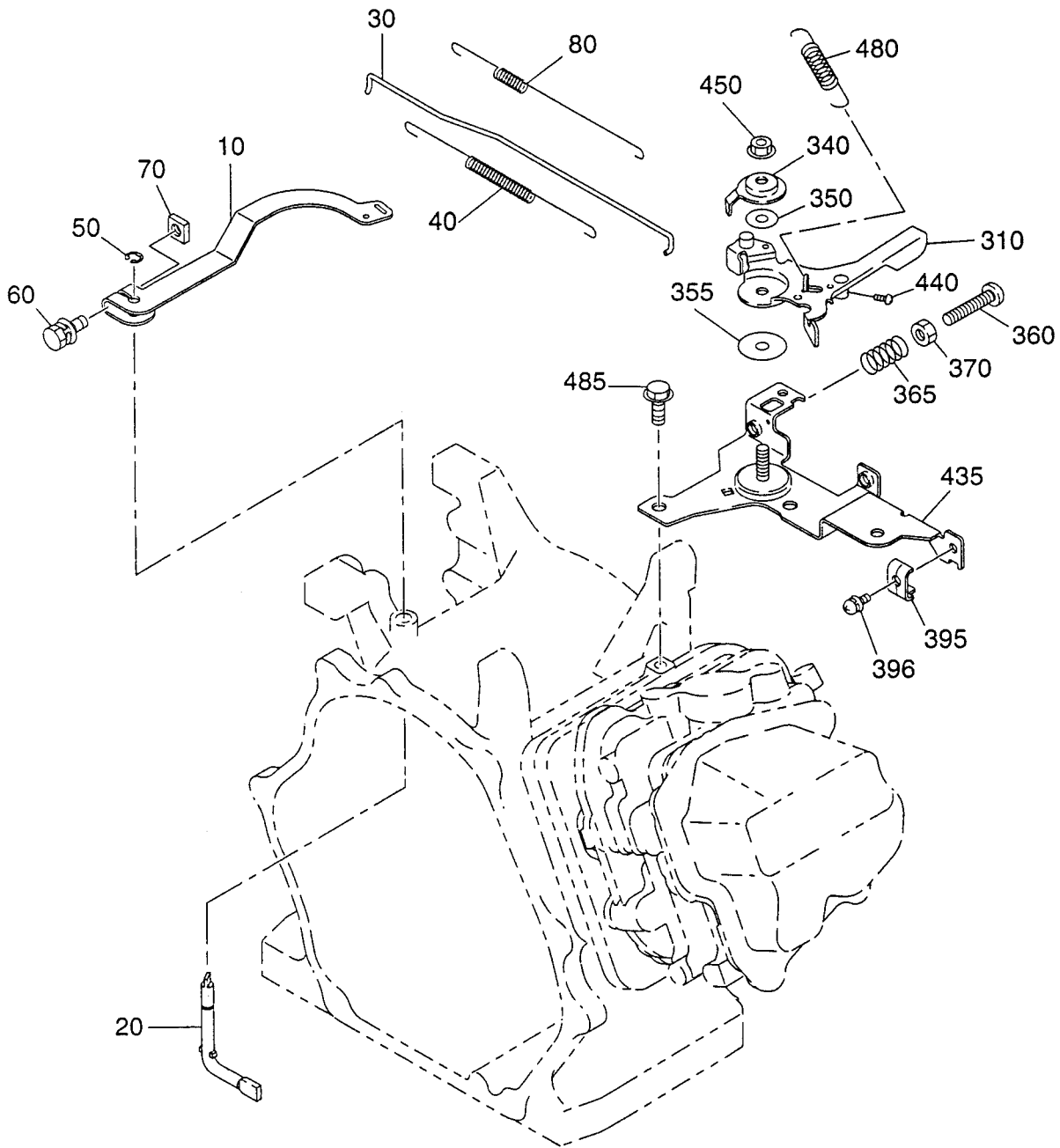






SECTION 4 GOVERNOR GROUP - OLD STYLE

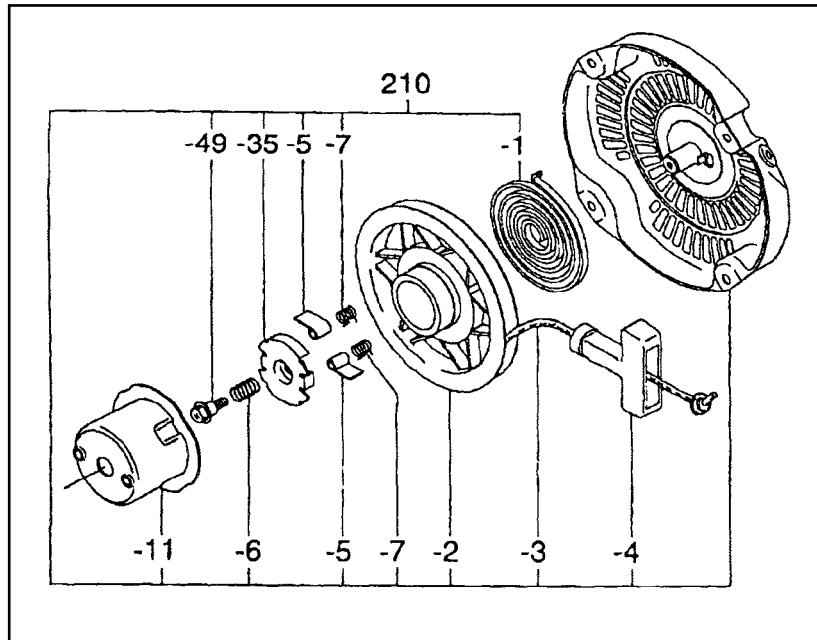
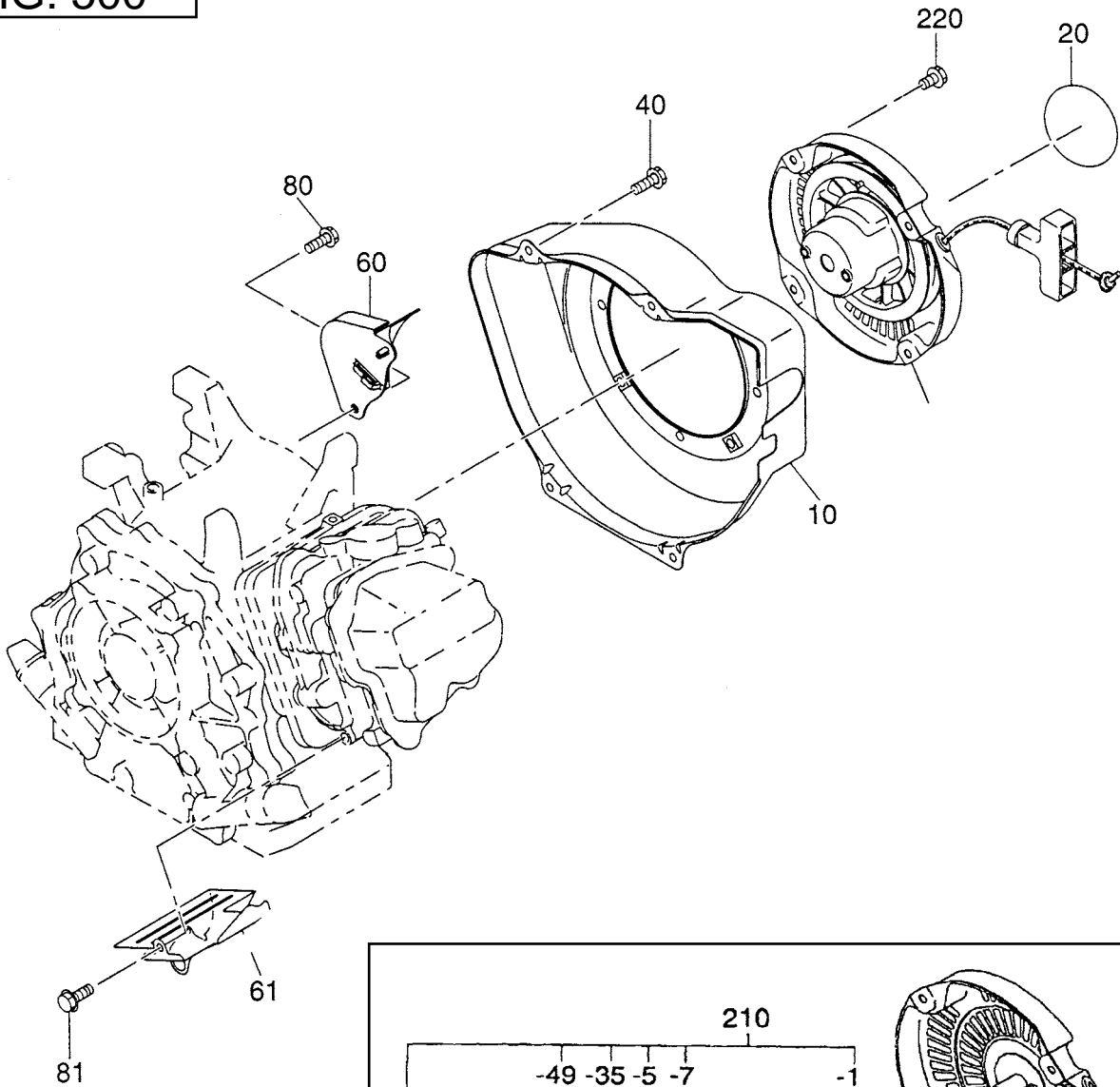
FIG. 400





SECTION 5 COOLING and STARTING GROUP

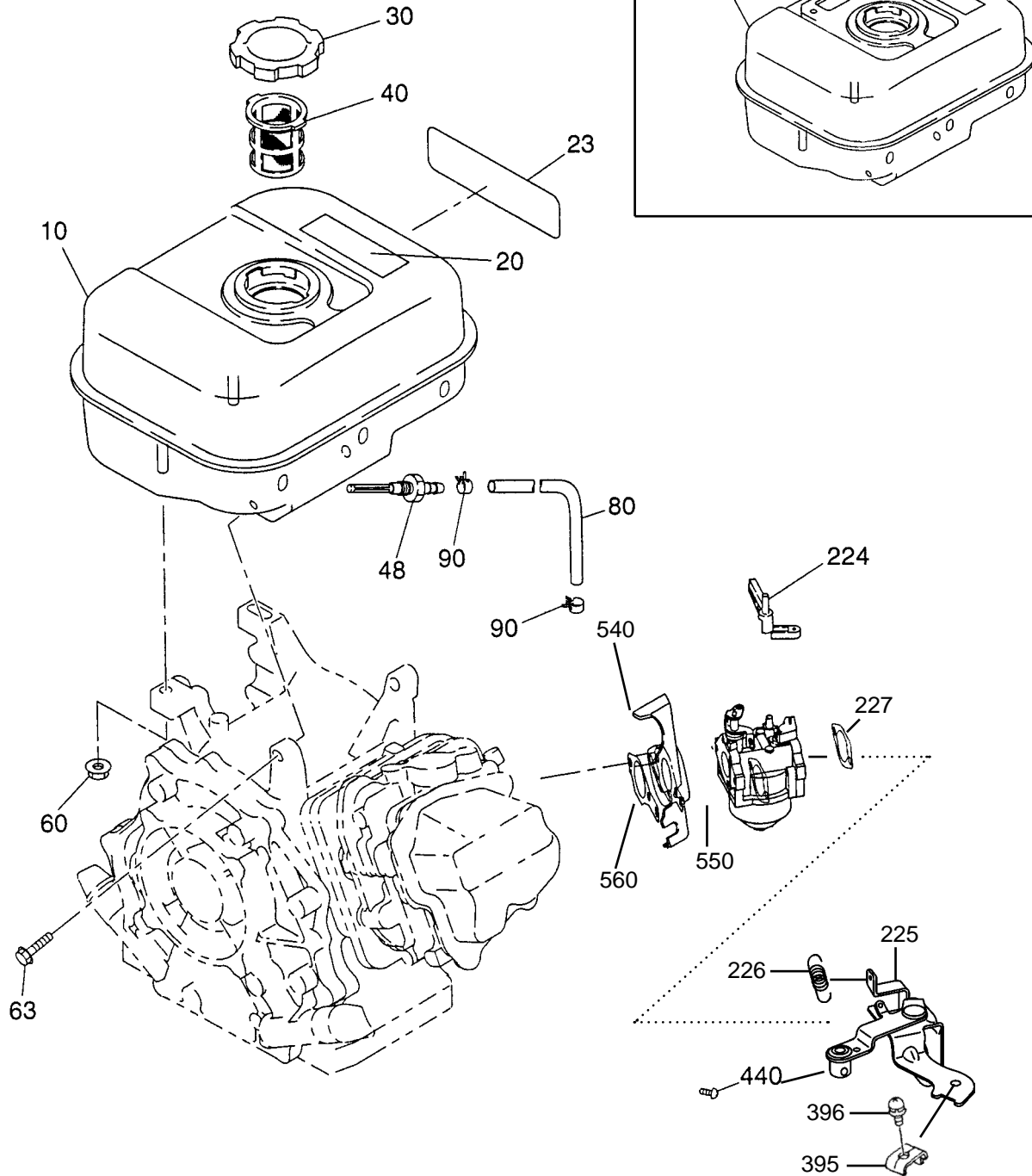
FIG. 500





SECTION 6 FUEL, LUBRICATION GROUP

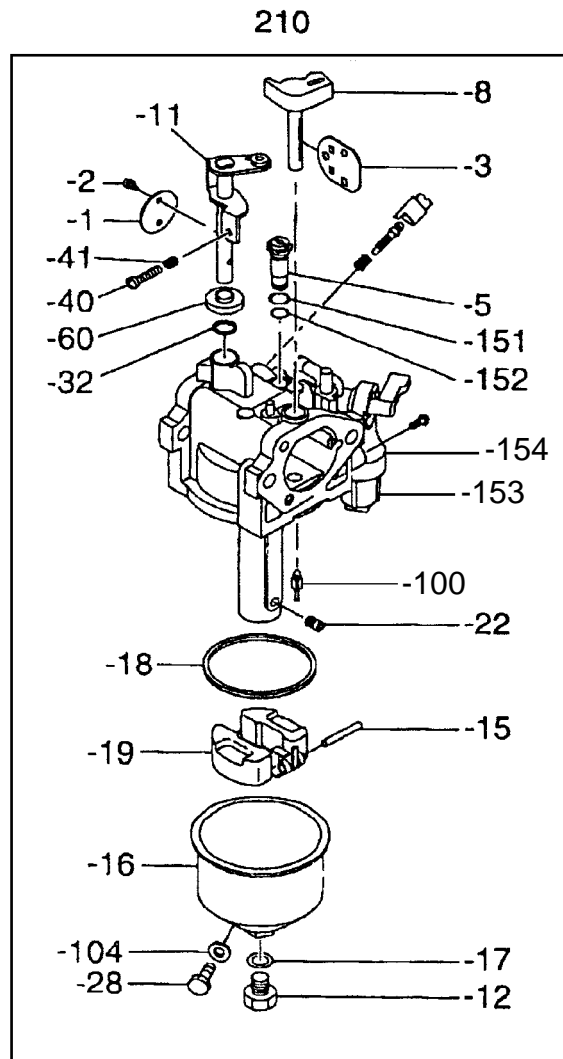
FIG. 600





SECTION 6 FUEL, LUBRICATION GROUP

FIG. 610







SECTION 7 ELECTRIC DEVICE GROUP

FIG. 700

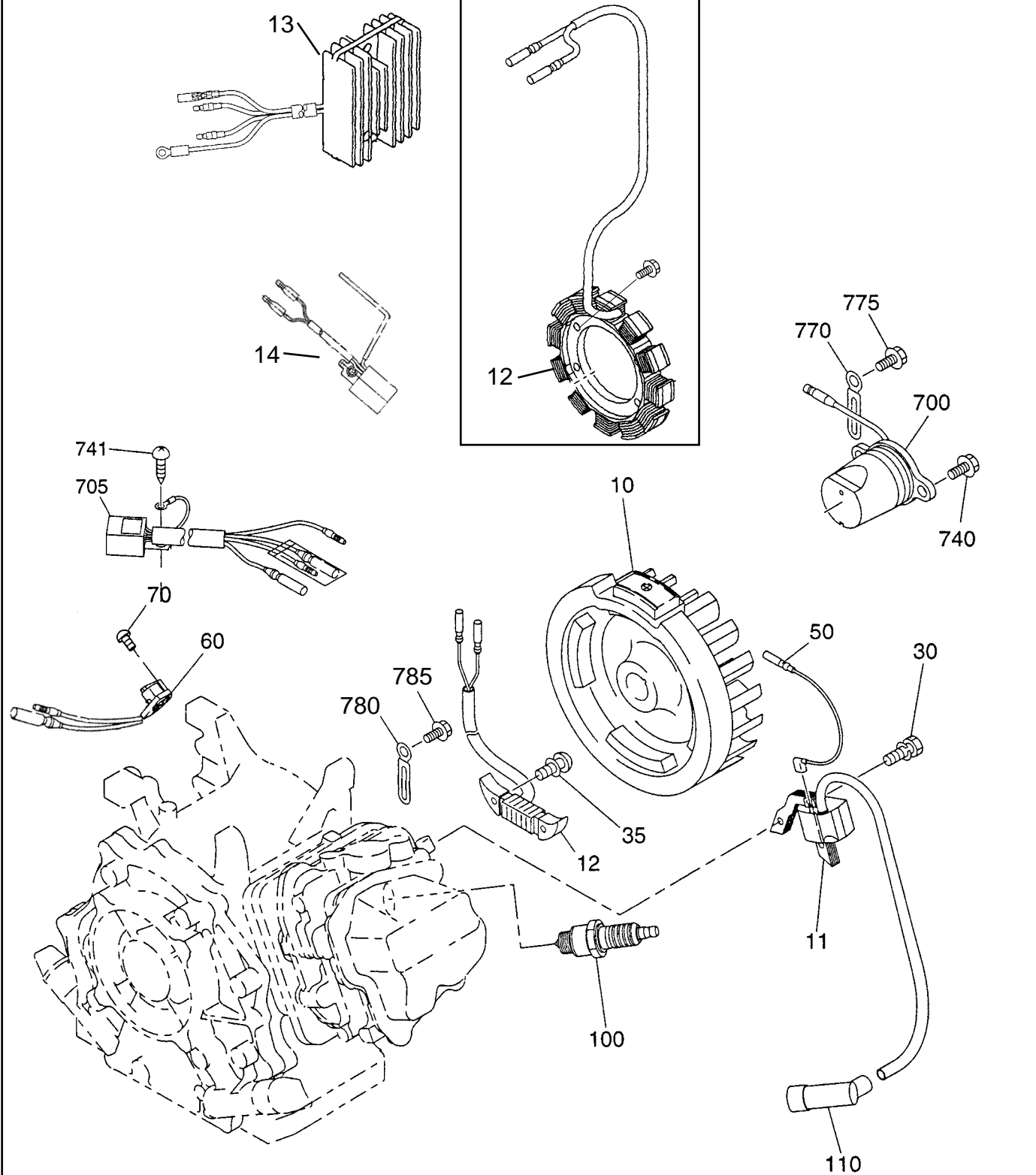
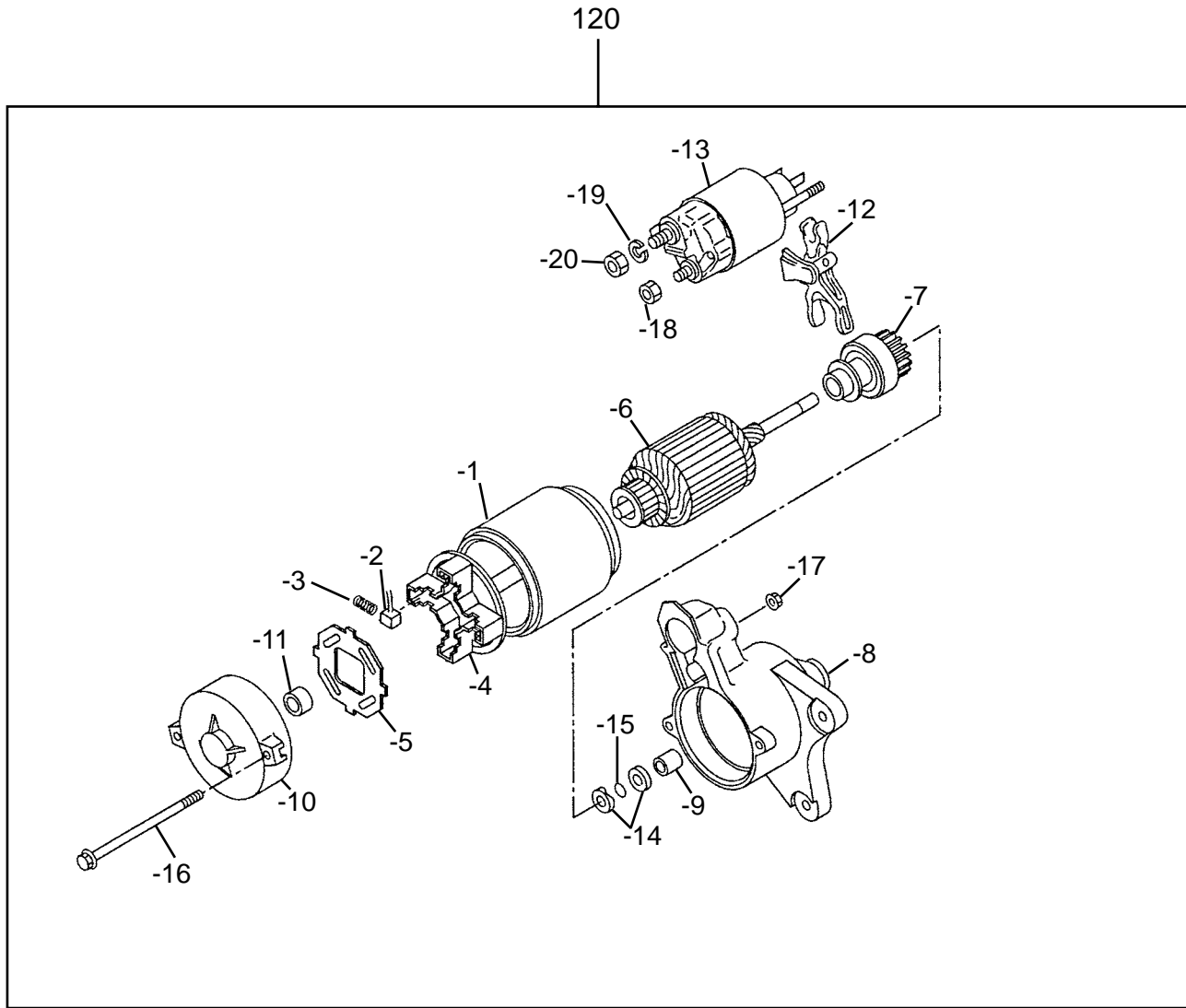




FIG. 710





SECTION 7 ELECTRIC DEVICE GROUP - CONTROL BOX

FIG. 720

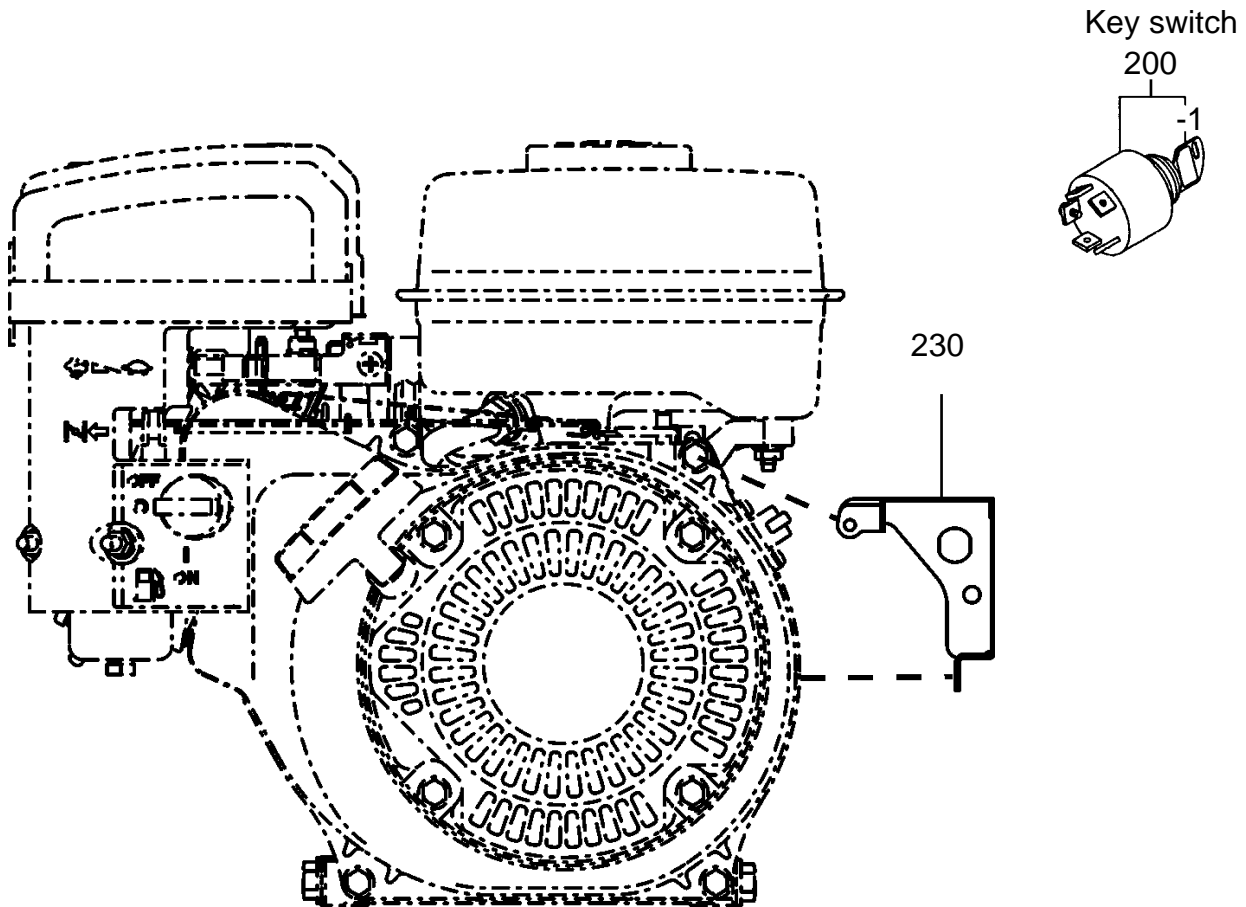




FIG. 900

